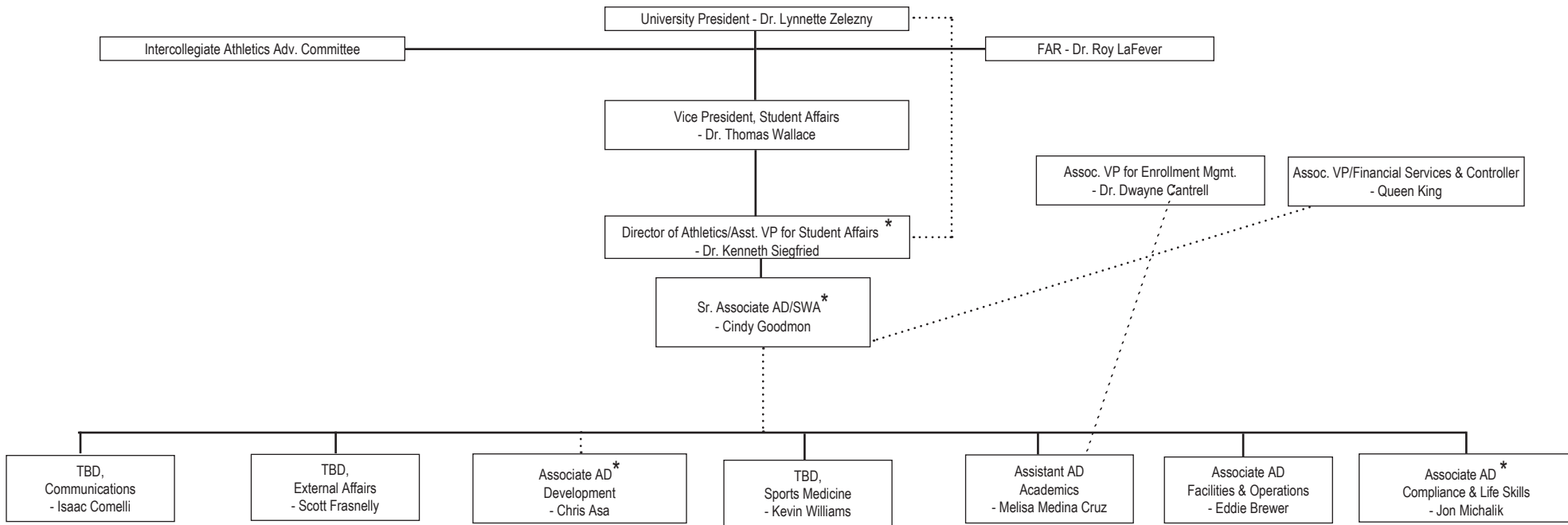


CALIFORNIA STATE UNIVERSITY, BAKERSFIELD

INTERCOLLEGIATE ATHLETICS ORGANIZATIONAL CHART -- EXECUTIVE STAFF (AS OF 10/7/21)



<p style="text-align: center;">*Sport Administrator</p> <p style="text-align: center;">Director of Athletics: Indoor Volleyball, Men's Basketball, and Swimming & Diving</p> <p style="text-align: center;">Sr. Associate AD/SWA: Women's Soccer, Women's Golf, Women's Basketball, Wrestling, and Beach Volleyball</p>	<p style="text-align: center;">Associate AD, Compliance: Track and Field, Cross Country, and Men's Soccer</p> <p style="text-align: center;">Associate AD, Development: Softball</p>
---	--

CALIFORNIA STATE UNIVERSITY, BAKERSFIELD

INTERCOLLEGIATE ATHLETICS ORGANIZATIONAL CHART -- REPORTS (AS OF 10/7/21)

