



CALIFORNIA

HIGH SCHOOL EQUIVALENCY PROGRAMS

Harvesting Hope...

2019

2019



"Serving, educating and improving seasonal agricultural workers' quality of life through education."



TABLE OF CONTENTS

4	INTRODUCTION	21	STUDENT HIGHLIGHTS
5	CALIFORNIA HEP FACTS	30	NAT'L HEP.CAMP ASSOC.
6	CALIFORNIA DIRECTORY	32	NAT'L HEP.CAMP FACTS
7	HEP PROJECT PROFILES		

UPDATE | JULY 2019

CALIFORNIA HEP

High School Equivalency Program for agricultural workers



California's High School Equivalency Programs

The High School Equivalency Program (HEP) was established in 1967 to help migratory and seasonal farm workers (or children of such workers) to obtain the equivalent of a High School Diploma (HSE) and subsequently, to attain employment or begin postsecondary education or training. There are currently 14 HEP programs providing services to migrant seasonal farmworkers (MSFW) in California. HEP grants are awarded by the U.S. Department of Education, Office of Migrant Education to 4-year universities, community colleges, and non-profit organizations.

OUR MISSION:

to serve, to educate, to empower



- In 2017-2018, HEP programs in California served 1594 migrant seasonal farmworkers



- In 2017-2018, 670 migrant seasonal farmworkers attained a High School Equivalency Certificate with the support of HEP



- 627 migrant seasonal farmworkers reported improvement in employment or advancement in their studies after completing HEP classes

CALIFORNIA LOCATIONS

Community Colleges

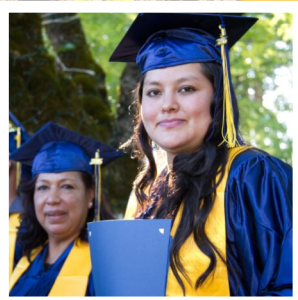
*Hartnell Community College
Mendocino Community College
Santa Rosa Junior College
West Hills Community College*

4-Year Universities

*California State University, Bakersfield
California State University, Fullerton
California State University, Long Beach
California State University, Sacramento*

Community-Based Organizations

*Central Valley Opportunity Cent., Modesto
Proteus, Inc. - Visalia
Cambridge Academies, Modesto
SER Jobs for Progress, San Diego County
SER Jobs for Progress, San Joaquin
SER Jobs for Progress, Santa Maria*



The National HEP/CAMP Association is a nonprofit membership organization comprised of High School Equivalency Programs (HEP) and College Assistance Migrant Programs (CAMP) located throughout the United States. California's 14 HEP grantees are all members of the National HEP/CAMP Association. For more information, please see our website <http://www.hepcampassociation.org/>

The Need

1 million

farmworkers in California fill an average of 425,000 full-time equivalent seasonal jobs

\$16,142

Average annual pay of primary farm workers in California+

"California's farm labor workforce," *California Agriculture Today*. April-June 2019. Vol. 73, No. 2

Our Capacity

\$6.4 M

Total amount of grants awarded to California's HEP programs in 2017-2018. HEP grants expand the State's capacity to support the unique educational needs of California's farmworkers and their families.

Our Graduates

California's 2017-2018 HEP graduates are working in salaried, full-time jobs with medical benefits and increased pay within 12 months of completing the program.

25%

94%

of California's 2017-2018 HEP graduates enrolled in programs of postsecondary education or training

California High School Equivalency Programs

Directory

2019—2020



California State University, Bakersfield

9001 Stockdale Highway
Bakersfield, CA 93311
Director: Lou Montano
lmontano@csub.edu



Mendocino College

1000 Hensley Creek Rd.
Ukiah, CA 95482
(707) 468-3000, ext. 6662
Director: Jackeline Gonzalez de Orozco
jorozco@mendocino.edu



California State University, Fullerton

2600 Nutwood Ave.
Education Classroom- EC310
Fullerton, CA 92831
(657) 278-8331
Director: Patricia Feliz
www.fullerton.edu/hep



Proteus, Inc.

William M. Maguy School of Education

1440 N. Shirk Rd.
Visalia, CA 93291
(559) 471-4550
Program Coordinator: Juan Valencia
proteusinc.org



California State University, Long Beach

1250 Bellflower Boulevard, SSC 280
Long Beach, CA 90840
(562) 985-2185
Program Coordinator: Carlos Ayon
www.csulb.edu/hep



San Diego County SER Jobs for Progress, Inc.

155 W. Main St. Suite 2
El Centro, CA 92243
(760) 592-4314,
Coordinator: Martha Anaya
www.ser-california.org



California State University, Sacramento

6000 J. Street
Sacramento, CA 95819
(209) 357-0062, ext. 135
Director: Andres Enriquez
www.csus.edu



San Joaquin Valley SER Jobs for Progress, Inc.

255 N. Fulton St., Suite 106
Fresno, CA 93701
(559) 452-0881
Coordinator: Adriana Chavez
www.ser-california.org



Cambridge Academies, Inc.

4300 Sisk Rd., Suite D
Modesto, CA 95356
(209) 531-8167
Director: Geni Boyer
<http://www.cambridgeacademies.org/>



Santa Barbara County SER Jobs for Progress, Inc.

301 S. Miller St., Suite 118
Santa Maria, CA 93454
(805) 310-5770
Coordinator: Veronica Dominguez
www.ser-california.org



Central Valley Opportunity Center, Inc.

6838 Bridget Court
Winton, CA 95388
(209) 357-0062, ext. 135
Coordinator: Beatrice Martinez
<http://www.cvoc.org/news/hep-newsletter-is-now-online>



Santa Rosa Junior College

1501 Mendocino Ave.
Santa Rosa, CA 95401
(707) 527-4978
Director: Catherine Prince
<http://hep.santarosa.edu>



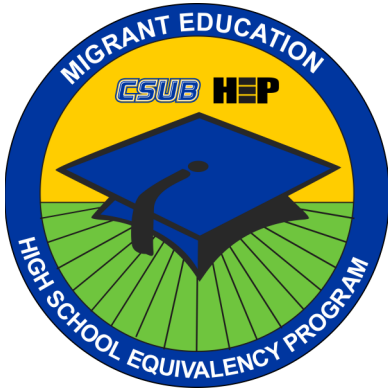
Hartnell College

1752 East Alisal St.
Salinas, CA 93905
(831) 770-7070
Director: Laura Zavala
www.hartnell.edu/hep



West Hills Community College

9900 Cody St.
Coalinga, CA 93210
(559) 934-2430
Director: Cecilio Mora
westhillscollge.com



California State University, Bakersfield High School Equivalency Program

Lou Montano, Director
(661) 654-6525
lmontano@csub.edu

Omar Correa, Assoc. Director
(661) 654-2797
ocorrea@csub.edu



No. of Students Funded to Serve	Annual Award
100 Students	\$474,750

GPRA ¹ 1—HSE NATIONAL ATTAINMENT TARGET 69%	
Performance Year	Bakersfield-HEP Success Rate
2017-2018	66%
2016-2017	88%
2015-2016	85%
2014-2015	80%
2013-2014	90%

GPRA 2—POST HSE NATIONAL PLACEMENT TARGET 80%	
Performance Year	Bakersfield-HEP Success Rate
2017-2018	91%
2016-2017	86%
2015-2016	81%
2014-2015	86%
2013-2014	83%

PROGRAM OVERVIEW

Operating since 2010, the High School Equivalency Program (HEP) at **California State University, Bakersfield (CSUB)** is one of forty-eight HEP Programs federally funded through a competitive grant process by the U.S. Department of Education, Office of Migrant Education.

HEP is an educational equity program designed to assist seasonal agricultural workers and members of their immediate family to complete their high school equivalency and, subsequently, obtain improved employment, begin post-secondary studies or enroll in a vocational training program.

Bakersfield-HEP is one of 14 HEP Programs in the State of California and the only project providing these specialized services in the Southern San Joaquin Valley. **Bakersfield-HEP** is on its second funding cycle through 2020. In addition, **Bakersfield-HEP** has exceeded or met the national performance targets for most fiscal years.

BAKERSFIELD- HEP STUDENT HIGHLIGHTS

- HEP Graduates are currently attending CSU Bakersfield, Taft College, Bakersfield College, and Bakersfield Adult School.
- HEP Graduates are currently enrolled in NO-FEE trainings such as: Barber School, Welding, Auto/Diesel Mechanic, and Bookkeeping.
- HEP Graduates are currently working in salaried, full-time, non-agricultural jobs with medical benefits, and increased pay.

KERN COUNTY COLLABORATION

- Bakersfield-HEP has established an ongoing collaboration and partnership with State HEP Projects, County Regional Migrant Education Programs, K-12 School District Schools, Community Colleges, Adult Schools, America's Job Center, WESTEC, Employment Staffing Agencies, and Kern County Collaborative Partnerships.

¹The Government Performance Act (GPRA) enacted by Congress to provide for the establishment of strategic planning and performance measurement in the Federal Government.



Pablo Jasis, Ph.D.
Principal Investigator
657-278-7056
pjasis@fullerton.edu

Patricia Feliz
HEP Director
657-278-8331
pfeliz@fullerton.edu

www.fullerton.edu/hep/

No. of Students Funded to Serve	Annual Award Amount
130 students	\$474,991

Performance Data for 2015-2018 Cal State Fullerton HEP	
GPRA 1: GRADUATION	
2017-2018	64%
2016-2017	75%
2015-2016	71%
GPRA 2: PLACEMENT	
2017-2018	76%
2016-2017	76%
2015-2016	70%
Data taken from Annual Performance Reports submitted to the U. S. Department of Education	



California State University, Fullerton High School Equivalency Program



PROGRAM OVERVIEW

CAL STATE FULLERTON'S HIGH SCHOOL EQUIVALENCY PROGRAM (CSUF-HEP) is one of 101 programs funded through competitive HEP/CAMP grants from the U.S. Department of Education, Office of Migrant Education. The **High School Equivalency Programs** assist migrant or seasonal agricultural workers, and their immediate family members, to attain a High School Equivalency Certificate and subsequently, gain improved employment, begin post-secondary studies, or enlist in the military.

PROGRAM HIGHLIGHTS

- First awarded HEP funding in July 2015. Currently funded through June 30, 2020.
- CSUF provides GED/HiSET classes and supportive services at **6 locations**: Orange County, Fallbrook, Vista, Ontario, Mecca, and Thermal.
- Partners include Region IX Migrant Education Program, Santiago Canyon College Assistance Migrant Program (CAMP), San Bernardino LEAD (Latino Education and Advocacy Days), North Orange County Community College District and California State University's Department of Elementary and Bilingual Education.
- CSUF HEP's annual "University Day" event brings over 100 farmworker families to campus to expose students to career and educational pathways. Faculty from Biochemistry, Engineering, Nursing, Kinesiology, Teaching, Counseling and Child Development.



Enterprise **CENTERS**



Enterprise Migrant

Dr. Geni Boyer, Director
gboyer@Cambridgeacademies.org
O. 209.408.8193
C. 209.531.8167

STUDENTS TO BE SERVED

2017-2018 81

GPRA 1 OR STATISTICS

MALE STUDENTS 9

FEMALE STUDENTS 72

GPRA 2 OR DEMOGRAPHICS

UPGRADED EMPLOYMENT-(%) 67

COLLEGE (%) 18

STUDENT HIGHLIGHT

Most of our students are parents who want to improve their lives to give a better future for their children.



CAMBRIDGE ACADEMIES ENTERPRISE MIGRANT HEP



PROGRAM OVERVIEW

Cambridge Academies **Enterprise Migrant Project** serves farm-working families at **multiple rural sites** in two Northern California Counties: **San Joaquin and Stanislaus**. . These counties have very limited transportation linking outlying rural areas with larger cities so a great percentage of farm workers live in isolated pockets throughout both counties. Many *young* seasonal farmworkers cannot afford rent in the off seasons so they live on the streets, thus we also offer a class for **qualifying homeless students**.

PROGRAM HIGHLIGHTS

Our delivery model makes it easier for farm workers and their families to participate in educational opportunities. We have also integrated job preparation and presentation skills within the language arts program so many of our graduates feel confident in applying for a better job once they complete their certification. Maria, an energetic and hard-working single mom, immediately applied for and got a job as an office clerk, which gave her the security of yearlong employment. *“I never thought that I would be able to leave the fields and always worried about my children’s future. I am now thankful that the Enterprise Program helped me achieve my American dream”.*

PROGRAM COLLABORATIONS

Partnerships and collaborations are vital to the Enterprise Migrant Project as we hold classes “in community” to make education more accessible to our clients. Partners are:

- Housing Authority (HUD) - classroom sites in Patterson, and West Modesto
- Self-Help Enterprises, LLC - Community Center in Newman
- HOST House Homeless Shelter/Transitional Living - classroom space and support for homeless clients in Patterson



CENTRAL VALLEY OPPORTUNITY CENTER

High School Equivalency Program

BEATRICE MARTINEZ
HEP COORDINATOR
bmartinez@cvoc.org
(209) 357-0062



STUDENTS FUNDED TO SERVE: 120

ANNUAL AWARD: \$438,322

DEMOGRAPHICS: 2017-2018

MALE: 35% FEMALE: 65%
UNDER 21: 16% OVER 21: 84%
ENGLISH: 17% SPANISH: 83%
MORNING INSTRUCTION: 100%

STUDENT HIGHLIGHT



“HEP has renewed my belief in myself and in what I can accomplish.”

Marisol Higareda
CVOC-HEP Graduate of 2018

PROGRAM OVERVIEW

Central Valley Opportunity Center-HEP is one of 45 federal High School Equivalency Programs funded through competitive grants from the U.S. Department of Education, Office of Migrant Education. The goal of HEP is to assist migrant or seasonal agricultural workers (and their family members) to obtain a high school equivalency certificate and eventually, gain improved employment, begin post secondary studies or enlist in the military. **CENTRAL VALLEY OPPORTUNITY CENTER** provides serves in the areas of Stanislaus, Merced and Madera counties in the state of California.

CVOC-HEP PROGRAM HIGHLIGHTS

- ◆ Currently funded through 2019
- ◆ Funding continues to provide educational services to farmworkers in the Central Valley of California since 2009.
- ◆ Provides serves to 120 students each year.
- ◆ Local sites serve the communities of Modesto, Turlock, Ceres, Atwater, Livingston, Merced, Madera, Chowchilla, Los Banos and other small rural towns around the larger cities in California.
- ◆ Services for parents and out-of-school youth provided in collaboration with Region III Migrant Education Program.
- ◆ Transition to college services facilitated by partnership with Madera, Merced and Modesto Community Colleges.

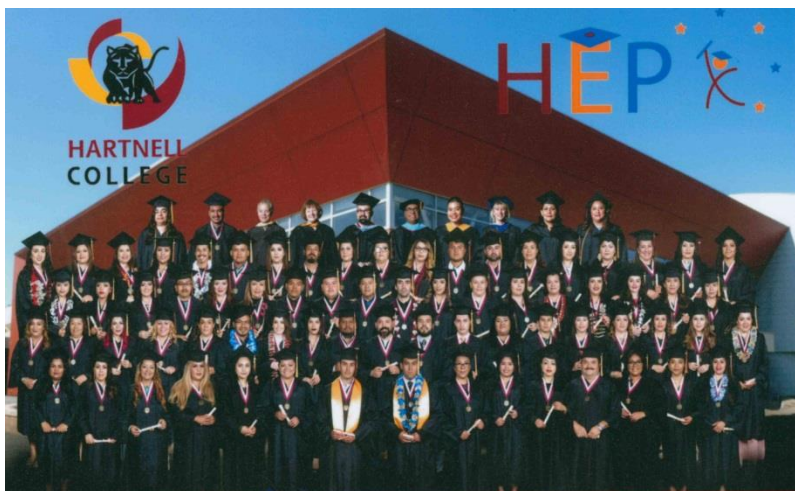
6838 Bridget Ct. Winton, CA 95388 209-357-0062



Hartnell Community College

High School Equivalency Program

Laura Zavala
 HEP Director
 Lzavala@hartnell.edu
 831-770-7070



PERFORMANCE DATA 2017-2018

STUDENTS SERVED

129

GPRA 1

93%

GPRA 2

82%

WHO WE SERVE

Male

33%

Female

67%

English

19%

Spanish

81%

Morning

34%

Evening

66%

Under 21

8%

21 & Over

92%

Hartnell's High School Equivalency Program is made possible by a US Department of Education grant to Hartnell College in Salinas, California. Hartnell College received one five-year grant (2006-2011), were renewed for a second grant (2011-2016) and are currently operating under our 3rd grant award.

Hartnell's High School **services and activities** support the achievement of our program's objectives and measurable outcomes. Services include

- Extensive outreach and recruitment in the Salinas Valley
- Screening for eligibility criteria, and assessment of reading comprehension and mathematical skills
- Multiple Instructional modalities and locations
- Academic counseling and planning for placement
- Student services to eliminate barriers to success such as: materials/supplies, transportation passes, health education and screenings

Hartnell HEP has **established partnerships** that support the success of our students. Current partnerships include:

- Local area Adult Schools (Salinas, Gonzales, Soledad, Greenfield)
- Monterey County Office of Education-Migrant Education Region 16, and alternative education programs
- Clinica de Salud del Valle de Salinas
- Office of Employment and Training (CET)
- CSU Monterey Bay,
- Hartnell College Student Programs and Services including: Mi CASA Dreamers' Center, Student Success Department and
- Topete Scholarship Foundation
- Loaves, Fishes and Computers



SER-Jobs for Progress, Inc. High School Equivalency Program

Michael Jimenez
HEP Director
(559) 452-0881
mjimenez@sercalifornia.org

Martha Anaya
HEP Coordinator
(760) 592-4281
manaya@sercalifornia.org



No. of Students Funded to Serve	Annual Award
125 Students	\$397,151

GPRA¹ 1—HSE NATIONAL ATTAINMENT TARGET 69%

Performance Year	SER-Fresno HEP Success Rate
2017-2018	84%
2016-2017	86%
2015-2016	83%

GPRA 2—POST HSE NATIONAL PLACEMENT TARGET 80%

Performance Year	SER-Fresno HEP Success Rate
2017-2018	94%
2016-2017	84%
2015-2016	85%

STAFF	TITLE
Irma Bobadilla	Program Placement
Gloria Panduro	Program Specialist
Joel Dueñas	Instructor
Christopher Heim	Instructor
Andrea Padilla	Instructor
Cesar Cano	Tutor
Ma. Beatriz Castillo	Tutor
Damian Garcia	Tutor
Connie Payan	Tutor

PROGRAM OVERVIEW

SER- HEP is one of 45 federal High School Equivalency Programs funded through competitive grants from the U.S. Department of Education, Office of Migrant Education. The goal of HEP is to assist migrant or seasonal agricultural workers (and their immediate family members) to obtain a high school equivalency certificate and subsequently, gain improved employment, begin post-secondary studies or enlist in the military.

PROGRAM HIGHLIGHTS

- SER-HEP provides these services in Imperial County
- Our program is currently funded through 2019, with a strong performance record, and exceeding national graduation targets for the past 3 years.
- Our program has been continuously funded to provide educational services to farmworkers throughout the State of California since 2015
- SER-HEP provides services up to 125 students each year, and thanks to our collaborators in each site, we have been able to serve the communities of Brawley, El Centro, Imperial, Calexico and Holtville.
- Successfully providing easy transition to college services facilitated by partnerships with Imperial Valley college, for parents and out-of-school youth, provided in collaboration with Region VI Migrant Education Program.
- Providing encouragement to pursue post-secondary education with campus visits and cultural events yearly.

SER-HEP PARTNERS

- Americas Job Center
- Center for Employment Training
- Imperial Valley College
- Imperial Valley Housing Authority
- Region VI Migrant Education Program
- Employment Development Department , Farmworker Services
- Imperial County Office of Education , Adult Services
- Riverside County Office of Education, Migrant Education Program
- Brawley Elementary School District, Migrant Education Program



LONG BEACH

Carlos Ayon

Program Coordinator
 hep@csulb.edu
 562-985-2185

Number of Students Funded to Serve 2017-2018

80 Participants Annually

Number of Students Served

93

Demographics

Male Female

10% 90%

English Spanish

0% 100%

Under 21 Over 21

2% 98%

Student Highlight



Diana Garcia

High School Equivalency Program

California State University, Long Beach



Program Overview: The purposes of HEP at California State University of Long Beach (CSULB) is to assist migrant and seasonal farmworkers and members of their immediate family: (1) obtain a general education diploma that meets the guidelines for high school equivalency (HSE) in California; and (2) gain employment or be placed in an institution of higher education (IHE) or other postsecondary education or training programs.

The HEP program delivers culturally appropriate and relevant HSE services to 80 participants annually for a grand total of 400 participants during a five-year project period. The program will provide intensive instructional, supportive, and financial services to those most in need. Upon completion of their HSE program, participants will be prepared, and motivated to continue their education in a postsecondary institution, training program, military service or secure employment leading toward a chosen career.

Partnerships: The California State University of Long Beach (CSULB) HEP program has established partnerships throughout the Greater Los Angeles County area including:

- Los Angeles County Office of Education – Migrant Education Region 10
 - Long Beach
 - Baldwin Park
 - Palmdale
 - Hawaiian Gardens
- Baldwin Park Adult School
- Long Beach School for Adults
- Long Beach Salvation Army



Jackeline Gonzalez de Orozco
 Program Manager
 (707) 468-3000 x 6662
 jorozco@mendocino.edu

Mendocino-Lake Community College High School Equivalency Program



No. of students funded to serve	Annual Award
70	\$445,547.00

GPRA 1: NATIONAL HSE ATTAINMENT TARGET 69%	
Performance Year	MC HEP Success Rate
2017-2018	71%
2016-2017	74%
2015-2016	69%
2014-2015	57%

GPRA 2: POST HSE NATIONAL PLACEMENT TARGET 80%	
Performance Year	MC HEP Success Rate
2017-2018	80%
2016-2017	83.7%
2015-2016	83%
2014-2015	82%

PROGRAM OVERVIEW

The HEP Grant is made possible by a *US Department of Education- Migrant Education grant* to Mendocino College in Ukiah, California.

The High School Equivalency Program (HEP) helps migratory and seasonal farmworkers (or children of such workers) who are 16 years of age or older and not currently enrolled in school to obtain the equivalent of a high school diploma and, subsequently, to gain employment or begin postsecondary education or training.

We received one five-year grant (2014-2019). MC HEP is one of the 14 HEP Programs in the State of California.

MC HEP SERVICES

Project activities employed to achieve the measurable objectives include: outreach and recruitment, orientation, counseling, diagnostic screening and assessment, academic instruction, books and curricular materials, geographically balanced instructional locations, student services (financial aid, etc.), academic workshops, tutoring program, testing fees, childcare, transportation, field trips, health and vision care, enrollment, career and job placement support.

MC HEP PARTNERS

We partner with local adult schools and high schools, as well as with Santa Rosa Migrant Education Office - Region 2 as well as HEP programs, Mendocino-Lake Adult & Career Education, Mendocino College ESL Department, local adult schools & high schools, California Human Development, North Coast Opportunities, Inc., Agricultural Associations, Family Resource Centers, local businesses and Mendocino College student services and programs.

William M. Maguy School of Education, Visalia High School Equivalency Program 2017-2018



Ken Kurts, Director of Education

kkurts@proteusinc.org

(559) 471-4550 Ext: 02

Dr. Dennis Johnston, Dean of Education

dennisj@proteusinc.org

(559) 471-4550 Ext: 07

Juan Valencia, Program Coordinator

jvalencia@proteusinc.org

(559) 967-1048

No. Students Funded to Serve	125
Funded Amount	\$464,850
Enrollment	120
Attainment	61
Placement	55
Out reach	54

Program Overview

The William M. Maguy School of Education (WMSE) HEP program aims to serve 120 Migrant Seasonal Farmworkers (MSFW's) and their immediate family members each year. The program will meet the needs of the community members from the Kings and Tulare county, and will accommodate various working schedules associated with MSFW's.

The WMSE HEP program can provide bilingual instruction, counseling, job readiness, placement assistance and is open entry to all participants. In addition, co-enrollment opportunities for supportive services such as; child care, food, utilities, and mortgage/rental assistance.

Program Highlight

- Serves 120 participants a year
- Evening classes offered at 5 different locations: Cutler-Orosi, Porterville, Hanford, Lindsay, and Diunba
- Testing/transportation assistance and on-site child care
- Referrals to other support services
- Basic computer literacy instruction
- FAFSA application assistance
- Employment, postsecondary education/training or military placement assistance
- Job Readiness services

Collaboration/Partnership

- William M. Maguy School of Education has established an ongoing collaborations with Porterville college, College of the Sequoias, California State University Fresno-CAMP, Delano, Tulare, Hanford, and Visalia Adult Schools, Lindsay-USD Migrant Education, and Tulare County Office of Education.

GPRA 1

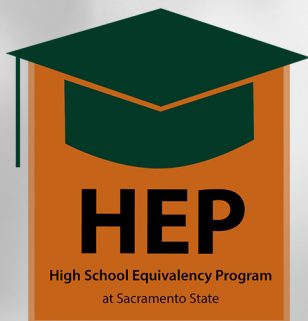
National Attainment Target 69%

51%

GPRA 2

National Placement Target 80%

82%



High School Equivalency Program (HEP)

Locations

Yuba City
Woodland
Lodi
Courtland
Stockton

Program Overview

The Sacramento State High School Equivalency Program (HEP) is one of the fifty federal funded programs nationwide designed to assist migrant or seasonal agricultural workers 18 years of age or older currently not enrolled in school obtain the equivalent of a high school diploma. HEP also helps students prepare to move on to higher levels of education or training and into more stable and better paid form of employment.

GPRA1 – HSE National Attainment Target 69%

2017- 2018	91%
2016- 2017	35%

GPRA2 – Post HSE National Attainment Target 80%

2017- 2018	92%
2016- 2017	100%

Demographics

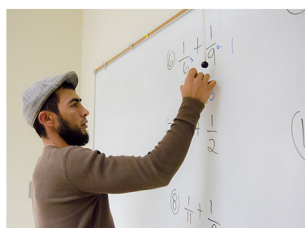
Female	Male
57%	43%
Spanish	English
90%	10%

Program Highlights

- Provide access to high school equivalency (HSE) completion to out of school migrant and seasonal farmworker youth and their family.
- Assist high school equivalency (HSE) completes move on to higher levels of educations, training and/or into more stable and better paid employment.
- Promote a family-like environment that allow students to affirm their own cultural identity, enrich academic and professional growth, and build networks that will support their advancement.

Partners

- College Assistance Migrant Program (CAMP)
- Dreamer Resource Center (DRC)
- Woodland Community College
- Migrant Education, Region 2
- Gray Avenue Middle School
- Bates Elementary School
- El Concilio, Stockton, CA
- California Human Development, Lodi, CA
- Consulado Mexicano, Sacramento, CA



SACRAMENTO
STATE
Redefine the Possible

Contact Information

Andres Enriquez, M. Ed.
HEP Director

T (916) 278 – 4514

E andres.enriquez@csus.edu

¹The Government Performance Act (GPRA) enacted by Congress to provide for the establishment of strategic planning and performance measurement in the Federal Government.



SER-Jobs for Progress, Inc. Santa Barbara High School Equivalency Program



Veronica Dominguez
 HEP Coordinator
 (805)310-5770
 veronicadominguez@sercalifornia.org

No. of Students Funded to Serve	Annual Award
100 Students	\$396,432

GPRA ¹ 1—HSE NATIONAL ATTAINMENT TARGET 69%	
Performance Year	Santa Barbara HEP Success Rate
2016-2017	34%
2017-2018	63%

GPRA 2—POST HSE NATIONAL PLACEMENT TARGET 80%	
Performance Year	Santa Barbara HEP Success Rate
2016-2017	100%
2017-2018	100%

PROGRAM OVERVIEW

SER- HEP is one of 45 federal High School Equivalency Programs funded through competitive grants from the U.S. Department of Education, Office of Migrant Education. The goal of HEP is to assist migrant or seasonal agricultural workers (and their immediate family members) to obtain a high school equivalency certificate and subsequently, gain improved employment, begin post-secondary studies or enlist in the military.

PROGRAM HIGHLIGHTS

- SER-HEP provides these services in Santa Maria, Lompoc, and Guadalupe
- Our program collaborates with professionals to offer various workshops monthly : professional development, mental health, emotional wellness, building job confidence.
- SER-HEP provides quarterly Cultural events
- Provides quarterly College tours for students post-secondary

SER-HEP COLLABORATIONS

- Migrant Program Region XVIII & XXII
- K-12 School District Schools
- Community Colleges: Cuesta College and Allan Hancock College
- Santa Barbara Housing Authorities
- Social Services

¹The Government Performance Act (GPRA) enacted by Congress to provide for the establishment of strategic planning and performance measurement in the Federal Government.



SER-Jobs for Progress, Inc. High School Equivalency Program

Michael Jimenez
HEP Director
(559)452-0881
mjimenez@sercalifornia.org

Adriana Chavez
HEP Coordinator
(559)452-0881
achavez@sercalifornia.org



No. of Students Funded to Serve	Annual Award
160 Students	\$475,000

GPRA ¹ 1—HSE NATIONAL ATTAINMENT TARGET 69%	
Performance Year	SER-Fresno HEP Success Rate
2017-2018	82%
2016-2017	83%
2015-2016	87%
2014-2015	91%
2013-2014	93%

GPRA 2—POST HSE NATIONAL PLACEMENT TARGET 80%	
Performance Year	SER-Fresno HEP Success Rate
2017-2018	92%
2016-2017	72%
2015-2016	81%
2014-2015	73%
2013-2014	84%

PROGRAM OVERVIEW

SER- HEP is one of 45 federal High School Equivalency Programs funded through competitive grants from the U.S. Department of Education, Office of Migrant Education. The goal of HEP is to assist migrant or seasonal agricultural workers (and their immediate family members) to obtain a high school equivalency certificate and subsequently, gain improved employment, begin post-secondary studies or enlist in the military.

PROGRAM HIGHLIGHTS

- SER-HEP provides these services in Fresno and Madera Counties
- Our program has been continuously funded to provide educational services to farmworkers throughout the State of California since 1999.
- SER-HEP provides services up to 160 students each year.
- Providing encouragement to pursue post-secondary education with campus visits and cultural events yearly.

SER-HEP COLLABORATIONS

- Region IV Migrant Education
- K-12 School District Schools
- Community Colleges: Reedley College & Fresno City College
- Adult Schools: Madera & Porterville Adult School
- Fresno and Madera Workforce Connection

¹The Government Performance Act (GPRA) enacted by Congress to provide for the establishment of strategic planning and performance measurement in the Federal Government.



CONTACT INFORMATION

Catherine Prince
 HEP Director
cprince@santarosa.edu

Beatriz Camargo
 HEP Coordinator
bcamargo@santarosa.edu

Enedina Vera
 HEP Recruiter
evera@santarosa.edu

(707) 527-4978

<http://hep.santarosa.edu>

PARTICIPANT DEMOGRAPHICS

Female	73%
Male	27%
Under 21 yrs.	20%
Over 21 yrs.	80%
GPRA 1	48%
GPRA 2	90%



PROGRAM OVERVIEW

Santa Rosa Junior College (SRJC) HEP is located in northern California. Our mission is to assist seasonal agricultural workers (and their immediate family members) in the Sonoma and Napa counties to obtain a High School Equivalency Certificate and subsequently, gain improved employment, begin post-secondary studies or enlist in military services. Over 240 students have graduated from this program since inception in 2012, 80% of which have matriculated into vocational and credit bearing pathways. SRJCHEP has become an integral part of the community, building on partnerships and creating opportunities for farm working families to improve their quality of life through education.

PROGRAM HIGHLIGHTS

- ❖ Funded through 2022
- ❖ Currently serving 105 participants
- ❖ Weekly morning and evening classes
- ❖ Academic support, transportation, tutoring, curricular materials
- ❖ Referral to social service agencies in the community

PROGRAM COLLABORATIONS

Our community partners have a strong commitment to our student’s success and provide support, guidance and insight in an advisory capacity in order to help the program meet its annual goals. Some of our current partners are:

- ❖ Migrant Education Program (Sonoma & Napa Counties)
- ❖ Via Esperanza of California Action Partnership (Santa Rosa)
- ❖ La Luz Center & El Verano Family Resource Center (Sonoma)
- ❖ Phillips and McPherson Family Resource Center (Napa)
- ❖ Corazon Resource Center (Healdsburg)

1501 Mendocino Ave. Santa Rosa, California 95401



HEP

WEST HILLS COMMUNITY COLLEGE DISTRICT HIGH SCHOOL EQUIVALENCY PROGRAM

West Hills Community College District

High School Equivalency Program

Cecilio Mora

HEP Director

ceciliomora@whccd.edu

(559) 934-2430



PERFORMANCE DATA 2017-2018

STUDENTS SERVED

100

GPRA1

66%

GPRA2

100%

HEP CLASSES LOCATIONS

Coalinga

Huron

Lemoore

San Joaquin

Mendota

Firebaugh

West Hills Community College District (WHCCD) has a rich history of serving the educational needs of the west side of the San Joaquin Valley for 87 years. The district serves nearly 10,000 students annually and covers 3,464 square miles with colleges in Lemoore and Coalinga and an education center in Firebaugh. The WHCCD High School Equivalency Program (HEP) is a five-year grant operating from 2015 – 2020. The program is funded to serve 100 commuter students from migrant or seasonal farm worker background annually with a budget of \$475,000.

WHCCD HEP is committed to assisting the completion of High School Equivalency (HSE) through academic and support services that address students' educational, career, personal, health, and financial needs. HEP provides placement services in universities, colleges, vocational institutions, military services, and other post-secondary activities or career advancement.

Additionally, WHCCD offers financial assistance, career readiness workshops, and cultural and educational leadership activities. The goal of the program is to empower students with the necessary academic/life skills to complete their HSE and exceed Obj. 1 and 2 National Targets: GPRA1 and GPRA2 performance requirements.

WHCCD HEP has established partnerships that support the success of our students including:

- Fresno, Kings, and Tulare County Migrant Education Programs
- WHCCD California Adult Education Consortium members
- Aria Community Health Care Centers
- West Hills College Coalinga and Lemoore student services programs: CalWORKs, SSS, Workforce Connection, EOPS, and DSPS
- Fresno State University
- West Side Institute of Technology

9900 Cody St, Coalinga, CA 93210



Student Highlights

2018-2019



Gabriel Minjarez
CAMBRIDGE ACADEMIES MIGRANT RESTART PROGRAM
CONGRESSIONAL DISTRICT 10

The Migrant Restart program has opened my eyes to a new world

Gabriel, an older looking, shy 21-year-old, has been homeless for a few years, doing seasonal work planting orchards while living on the streets because his drug habit didn't leave him enough money to afford rent. Four months ago, he decided to change his life and joined a transitional living program where he kicked his habit and realized he needed to get his high school education to improve his life. The shelter/transitional living facility is a HEP partner which was helpful in the ability to coordinate an HSE preparation program and enrolling him in the RESTART mindset transformation classes while he was off work. He has progressed beautifully and as a new work season starts, new hope fills Gabriel. "I never realized that having a home and better work was for me. I used drugs to quiet the pain and despair I felt about my life without realizing that drugs kept me lost on the streets. The Migrant RESTART program has opened my eyes to a new world. I will even be able to go to college! I love agriculture and also I'm good at drawing so I might even be able to have a career related to what I love to do. I don't mind the extra effort I need to make time to study and also work because it is temporary, and my graduation is around the corner!"

Next Page





CSU, Bakersfield - GED Graduate
2013



CSU, Bakersfield - B.S. Graduate
2019

Jessica Valdez-Barbosa
CALIFORNIA STATE UNIVERSITY BAKERSFIELD
CONGRESSIONAL DISTRICT 21, 23

First Generation College Student's Success Story

Jessica graduated in the spring of 2019 with a Bachelor of Science in Physical Education and Kinesiology. Ms. Valdez-Barbosa is determined to make a positive impact in her community by becoming a physician assistant in the near future and hopes that her story will inspire others to pursue a higher education.

Jessica Valdez-Barbosa was born in Delano, California. Jessica's parents, Gloria Valdez and Braulio Valdez, immigrated to the United States from Puebla, Mexico in search of a better future and hopes of starting a family. When Jessica was few months old, her family moved to Queens, New York where her mom obtained a job as a cashier and her dad attained a job in a restaurant as a cook. Jessica did not enjoy living in the area where they lived; her and her brother were not permitted to go outside as a consequence of the crime in the area. However, Jessica did enjoy the culture and diversity of New York.

During the September 11, 2001 attack in New York City, Jessica's dad lost his job and struggled to find a stable position. When she was 13 years old, her family decided to move back to Wasco, California where her parents returned to working in agriculture where they had worked for many years. Jessica had the opportunity to attend Wasco High School as a sophomore. While in high school, Jessica was inspired by her counselors on the importance of a higher education. She was excited to do well in her classes and prepare herself for college. Unfortunately, shortly after their arrival in Wasco, Jessica and her parents had to relocate back to Puebla, Mexico to take care of her ailing grandmother.

After spending a few years in Mexico, Jessica was eager to return to California to continue with her studies. Jessica's parents decided that it would be best for her to return to California to continue with school. Unfortunately, Jessica was deficient in school credits because of her absence from high school. Jessica's aunt, Candida Valdez, searched for resources to help her niece continue with a higher education. Jessica was able to get in contact with the CSU, Bakersfield - High School Equivalency Program "I thought it was a great opportunity for me and I quickly enrolled in the HEP program. That summer, I obtained my High School Equivalency Certificate, and with the guidance of my CSUB-HEP counselor, enrolled at CSU, Bakersfield in the fall."

Jessica was excited to start a new chapter in her life but soon was faced with challenges beyond her control. Within a span of a couple of years, Jessica lost her two grandfathers and one grandmother. "It was a very difficult time for me as I had to cope with the deaths in the family and at the same time I had to remain focused on my studies." Her parents and grandparents made it clear to her that education can be a powerful tool if you want to have an impact on people's lives. "I've always been motivated when it comes to school because I love to learn new things, and I've always had a dream of working in the medical field where I can help those in need, especially those in low-income communities."



Marisol Higareda Gomez
CENTRAL VALLEY OPPORTUNITY CENTER, INC.
CONGRESSIONAL DISTRICT 10,16

"One day, I will become a Registered Nurse and finally make all my dreams come true."

Marisol Higareda Gomez was born in Jiquilpan, Mexico on October 3, 1991. She was born into a family of eight and by an early age her family and her started coming to the U.S. and staying in migrant camps for 6 months, which was the harvest season for her parents. Marisol's parents continued with the same routine every year, so it was hard for her to stay in school and learn the

English language, however, she's thankful to say that today she is fluent and a bilingual in both English and Spanish. In September of 2017, a great opportunity became available, an evening class at the camp to attain your High School Equivalency Diploma by the CVOC-HEP Program. The best thing was that the class was offered at the camp students like Marisol did not have to go anywhere after working 10-12 hours in the fields. When Marisol started the program the harvest season was almost over and she was happy because this opportunity would get her closer to her goals. She is thankful that everything worked out for her. Marisol Higareda graduated with her GED certificate in October of 2018 while she was still working, caring for her family, and attending to responsibilities as a mother, daughter, and wife. But her dreams were becoming a reality and she would tell herself that she was capable of that and so much more. She has set goals, "One day, I will become a Registered Nurse and finally make all my dreams come true."



Liliana Batatz and Beatriz Vasquez
CALIFORNIA STATE UNIVERSITY FULLERTON
CONGRESSIONAL DISTRICT 35, 36, 39, 50

Creating a new cycle of hope and a legacy of migrant family success.

Liliana Batatz (HEP '12) and Beatriz Vasquez (HEP '16) are outstanding HEP alumni. Each woman navigated HEP classes with school-age children in tow and each woman graduated with their High School Equivalency Certificates within 1 year of entering the program. After completing the HEP program in Spring of 2012, Liliana Batatz leveraged her Certificate to obtain a job working in a

tax preparation agency. Her supervisors saw her potential and sent her to receive additional training and certifications. 7 years later, the days of picking oranges are long behind the family. Liliana just completed a small business incubator program with Orange County and has started her own business. Inspired by her mother's own graduation, Liliana's daughter Karina, finished high school not long after Liliana and this spring, received her Bachelor's degree in Communications from Cal State Fullerton. Similarly, Beatriz Vasquez's graduation from HEP was followed by her twin sons choosing to attend Cal State Fullerton as freshman this year. HEP continues to link entire families to the educational pipeline!



Diana Garcia
CALIFORNIA STATE UNIVERSITY LONG BEACH
CONGRESSIONAL DISTRICT 47

Mother is motivated by her sons to complete a degree and help her community

Diana García grew up in Altamirano, Guerrero, México. As a child, she worked with her grandparents during her vacations by working in the fields. At age 15, she immigrated to the United States to help her family financially after she finished middle school. Although her dream was to continue her education, she thought it was too expensive, and becoming a single mother made it seem impossible to go to school. She began working planting, picking and packing various vegetables. Although it is a very tough line of work, she enjoyed it, and because of this work, she became eligible for the Migrant Education Program (MEP).

Diana considers it a blessing that the Migrant Education Program connected her with HEP because she had the opportunity of obtaining her high school certificate. She faced and continues to face obstacles like being the main provider for her household, working three jobs, having health issues, and at times having to take her kids to work. Nevertheless, her main source of motivation has been her sons, and because of them, she pushes forward every day. Her sons have supported her throughout her journey and even helped her study for the math exam. Currently, Ms. Garcia is taking English classes at Long Beach City College with the goal of obtaining a Medical Billing Certificate to be able and help others. Her goal is to obtain a college degree in order to gain better employment opportunities and demonstrate that the Latino community wants to better themselves.



María Carmen Parra
HARTNELL COMMUNITY COLLEGE DISTRICT
CONGRESSIONAL DISTRICT 20

"Building a community of success"

Maria Carmen Parra graduated from Hartnell's HEP Program in 2008 and currently works for the Monterey Department of Health Bright Beginning's program as a community leader. However, Maria's educational journey was in her own words "long and full of challenges." Maria was born in Nayarit, Mexico, to a low-income family. Due to limited educational opportunities and economic barriers, Maria only reached 6th grade. In 2008, Maria started her educational journey with Hartnell's HEP. "Each HEP instructor impacted my life in a tremendous positive

way. They made me feel welcome from the very first day in the program." Upon finishing her High School Equivalency, Maria enrolled in ESL courses at Hartnell College, and in 2015, she earned an Associate's Degree in Sociology. Although her college experience was positive, Maria faced a multitude of barriers from learning English, family and financial difficulties. "My nights turned into my only time to do homework, and my weekends were dedicated to projects and home responsibilities." In 2017, after 8 years of hard work and dedication, Maria graduated from California State University with a Bachelor's Degree in Collaborative Health and Human Services with a minor in social work and concentration in public policy. She has interned for Health organizations such as Conectores de Carreras de la Salud, Building Healthy Communities, MILPA, and Colectiva de Mujeres. These agencies have allowed her to develop her professional skills. With her profession, Maria endeavors to bring equity and social justice in our Salinas community.



Irma Haskell

MENDOCINO-LAKE COMMUNITY COLLEGE DISTRICT, INC.

CONGRESSIONAL DISTRICT 2

HEP Alumni pushes forward to educate and empower her community

Mrs. Haskell was born and raised in Mexicali, Baja California Mexico, and then migrated to the United States, postponing her studies for years. She now lives in Lake County, California, one of the poorest counties nationwide. She has worked in the vineyards of Mendocino and Lake Counties, in pear packaging sheds and customer service. In January 2016 she began her studies with Mendocino HEP. She made great efforts to attend classes, and traveled a long distance from Lake County to Ukiah for tutoring, and workshops despite family obligations. At first she had mixed feelings about attending but she kept pushing forward. After much dedication to her studies and support from her family, she graduated in November 2016. After receiving her High School Equivalency Certificate, she enrolled in her first semester at Mendocino College and has since been in Honor Roll with 4.0 GPA, and has received college scholarships, she says, "I am very proud of myself and it means a lot to me but it all started with the HEP program." She began taking English as a Second Language classes and later declared her major in Human Services. Mrs. Haskell has experienced positive support from social workers and now wants to pay it forward and help disadvantaged families in Lake County. Now she is a semester away from completing her studies. HEP was an inspiration and an incentive to realize her dreams, she says HEP gave her the orientation and motivation to continue with her studies.



Leonel Arafat Reyes Gutierrez

PROTEUS, INC.

CONGRESSIONAL DISTRICT 22

HEP student continues business studies at Reedley Community College

"HEP student continues business studies at Reedley Community College"

Leonel Arafat Reyes Gutierrez is 26 years old. In August 26, 2018 he decided to stay in the United States seeking a better life next to his partner. In Tiquicheo, Michoacán, Mexico, Leonel received his Bachelor's degree in Secondary Education, unfortunately he found his education not valid in the United States. Faced with this difficult situation Leonel was worried about

his future career and quality of life, searching for options Leonel met with Reedley Community College counselor Josefina Ramirez, who immediately connected him with the Proteus, Inc. Dinuba Service Center. There, Leonel met HEP Case Manager Luz Rodriguez, soon after Luz helped Leonel enroll into the Dinuba evening HEP class with Instructor Juan Guzman. After completing 12 hours of instruction, Leonel started taking the HiSET exams and passed each one on the first try and graduated from the HEP program. Leonel has expressed his gratitude to the Proteus, Inc. HEP program, he enjoyed working with instructor Juan Guzman and particularly having the ability to take the HiSET exams in his native language. Leonel is now a full time student at Reedley Community College studying ESL and working on a degree in business.



Iridian Rosario Lomeli Garcia

SACRAMENTO STATE

CONGRESSIONAL DISTRICT 6

"An Example of Hard Work and Perseverance"

Iridian Rosario Lomeli Garcia grew up in Jalisco, México, in a farm working family. She is the oldest of four siblings. Due to the disparity of economic resources, she decided to immigrate to the United States to seek better life opportunities.

In 2014, Rosario came to the United States to improve her life and to help her family in Mexico. As the eldest daughter, "I feel committed to setting the example for my younger siblings."

Rosario knew that pursuing an education was the only way to succeed and break the cycle in which she and her family lived in.

In 2015, Rosario started taking English as a Second Language classes at the Adult Education School. At the same time, she was working 10 to 12 hour shifts. The following year, a friend informed her about the HEP program. She immediately contacted the program to get more information about it. "The teacher took care of me, she told me about the benefits the HEP Program offers and the opportunities I could have at the end of the program."

As she mentions, "being in this program, I learned that the American dream is not only about materialistic things, but personal development." After completing her HSE, Iridian was able to obtain a better paying job. She is currently attending Woodland Community College, pursuing her dream on obtaining a university degree in psychology.



Miguel Angel Álvarez

SANTA ROSA JUNIOR COLLEGE

CONGRESSIONAL DISTRICT 2, 5

Family's sole provider pursues higher education

Miguel Angel Alvarez was born in Guadalajara Jalisco, Mexico and has been living in the US since he was 18 years old. Through the years he has held several jobs such as painter, construction worker, cook, supervisor and business owner. He currently works in the wine industry and continues to grow professionally. One of his goals was to obtain a High School Equivalency Certificate and that is how he found HEP. He obtained his certificate in six months and now sees the opportunity to continue pursuing post-secondary education and transfer to four-year university in the near future.

"Education has opened a lot of doors for me. It has given me the ambition to do things in life that I hardly imagined doing before. When I started working in the vineyards, I was a seasonal worker and didn't have a full-time job. As the sole provider for my family I needed to do something else, something different. I realized that in order to grow, I needed an education, it is then that I decided to pursue a High School Equivalency Certificate. Now have a full time job and I continue to pursue higher education."



Olivier Sandoval
SER/JOB FOR PROGRESS, INC. – SAN DIEGO COUNTY
CONGRESSIONAL DISTRICT 52

“From working in Alaska and the agricultural fields to pursuing her goals at Imperial Valley College”

Olivier Sandoval was born in Guasave, Sinaloa. She would walk to school daily to attend classes in the mornings and worked in the evenings. When she enrolled in the university, she began taking graphic design courses but didn't feel accomplished, and therefore, I switched her major, to Criminology and loved it. Unfortunately, she didn't finish because she married and had three children. Olivier's family encouraged her to immigrate to the United States. Without the diploma she found herself working in Alaska and the agricultural fields. The work was hard but it was

harder to be away from her children. She decided to enroll in the SER Imperial HEP Program to obtain her high school equivalency certificate. It was rough because they lived in a women's shelter. Once again she found herself walking to class, like in her childhood. It took Olivier over a year to complete the tests but she was one point deficient in Social. She struggled and exhausted all her opportunities to test in that subject. She had to wait until January 2019 to retake the exam. In the meantime, she took a Citizenship class and became a U.S. citizen. “I knew that I couldn't give up now and I finally passed the Social Studies test.” Currently, she is enrolled at Imperial Valley College, ESL classes and will enroll in Criminal Justice courses. She says, “I am certain I will accomplish my goals! My children are my motivation and because of them I never give up.”



Vianey Guevara
SER/JOB FOR PROGRESS, INC. – SAN JOAQUIN VALLEY
CONGRESSIONAL DISTRICT 9

“HEP student leaves abusive household and pursues degree in social work”

Vianey Guevara was born May 2, 1973, in Netzahualcoyotl, Mexico. Vianey came to the United States more than 20 years ago with her ex-husband. Her ex-husband mentally and physically abused her and it wasn't until years later that she was able to overcome the relationship. She left the relationship and raised her three children as a single parent. She learned about the Fresno HEP program and decided to give it a try. It took her two years to graduate, but in those two years, she learned her

strengths and passions. This program was an intervention well needed in Vianey's life. She is now enrolled at the Fresno Community College and hopes to pursue a degree in social work.



Leticia Cervantes Sanchez
SER/JOB FOR PROGRESS, INC. – SANTA BARBARA COUNTY
CONGRESSIONAL DISTRICT 24

"Family advances their education to support their daughter with Neurofibromatosis type 1"

Leticia Cervantes Sanchez is originally from Queretaro, Mexico. She is a proud mother of two children. Leticia's oldest daughter is ten and was born with Neurofibromatosis type 1. Doctors discovered an uncontrolled growing tumor in her brain. Her daughter is now blind and the outcome of her condition is unknown at this time. Her family came to America to seek medical treatment for her daughter. She mentions, "My daughter sees life through our eyes." Leticia's family heard about the Santa Barbara HEP program at a Migrant Fair event during the fall. Leticia and her husband both graduated and received their GED certificates. After completing the HEP program she completed a Community Health Advisor course with Dignity Health and her husband received a job as a tutor with the HEP program. Leticia is now working as a health advisor. Leticia adds, "We want to thank the HEP program for all they do."

ical treatment for her daughter. She mentions, "My daughter sees life through our eyes." Leticia's family heard about the Santa Barbara HEP program at a Migrant Fair event during the fall. Leticia and her husband both graduated and received their GED certificates. After completing the HEP program she completed a Community Health Advisor course with Dignity Health and her husband received a job as a tutor with the HEP program. Leticia is now working as a health advisor. Leticia adds, "We want to thank the HEP program for all they do."



Ana Lilia Bravo
WEST HILLS COMMUNITY COLLEGE DISTRICT
CONGRESSIONAL DISTRICT 21

"No busques cuentos con final feliz. Busca ser feliz sin tanto cuento." ("Don't look for stories with happy endings. Look to be happiness without so much story.")

Ana Lilia Bravo is a HEP student at West Hills College Lemoore (WHCL) who is approaching the completion goal of her High School Equivalency (HSE). Though diligent study and hard work, Ms. Bravo has successfully completed most of her coursework and has only the mathematics exam remaining. She hopes to pursue an associate degree in Culinary Arts at WHCL and transfer to Fresno State University, specializing as a Pastry Chef. Ms. Bravo was born in Leon, Guanajuato and is currently living in the small city of Kingsburg, CA. Her chief motivation is self-sufficiency through gainful employment made possible with an HSE. Throughout her time in the program, Ms. Bravo's biggest support system continues to be her family. Her biggest challenge is the time she spends away from her family to work and attend the HSE class. However, when she sets a goal for herself, she works very hard to complete it. While being a HEP student, she has come to realize that she does not give up. Her favorite words of wisdom: "No busques cuentos con final feliz. Busca ser feliz sin tanto cuento." ("Don't look for stories with happy endings. Look to be happiness without so much story").

iciency through gainful employment made possible with an HSE. Throughout her time in the program, Ms. Bravo's biggest support system continues to be her family. Her biggest challenge is the time she spends away from her family to work and attend the HSE class. However, when she sets a goal for herself, she works very hard to complete it. While being a HEP student, she has come to realize that she does not give up. Her favorite words of wisdom: "No busques cuentos con final feliz. Busca ser feliz sin tanto cuento." ("Don't look for stories with happy endings. Look to be happiness without so much story").



Guillermo Espinoza Martinez
WEST HILLS COMMUNITY COLLEGE DISTRICT
CONGRESSIONAL DISTRICT 21

Guillermo Espinoza plans to complete bachelor's degree in Business Administration"

Guillermo Espinoza Martinez is a HEP 2019 graduate student from West Hills College Coalinga (WHCC) - Mendota Class. A driven student, Mr. Espinoza's goal has been to obtain his HSE to transition to college. Currently, Mr. Espinoza is enrolled in the Residential Electrical class at the Westside Institute of Technology. Mr. Espinoza's ultimate education goal is to obtain a degree in Business Administration. He is planning to enroll at WHCC in the fall 2019 semester and transfer to Fresno Pacific to complete his bachelor's degree. Mr. Espinoza understands the value of education and how his HSE will

assist him in starting a career that doesn't revolve around seasonal agriculture. Mr. Espinoza's biggest support is his wife, who also is enrolled in the HEP program. Ms. Espinoza was born in San Salvador, El Salvador and is currently living in the small town of Mendota, CA. Proud of his accomplishments, Mr. Espinoza shows great perseverance and a strong educational vision for success. Lastly, Mr. Espinoza is proud that he is living his "American Dream" through obtaining an education.



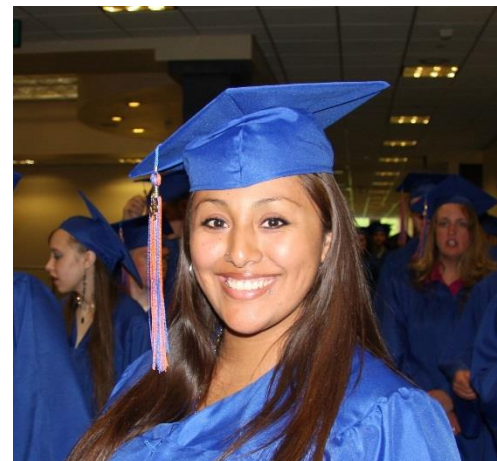
The National

HEP/CAMP

Association



The National HEP/CAMP Association is a nonprofit membership organization comprised of approximately 101 High School Equivalency Programs (HEP) and College Assistance Migrant Programs (CAMP) situated in IHEs (Institutes of Higher Education) throughout the United States and Puerto Rico. The National HEP/CAMP Association's priorities are to increase the educational opportunities to the family members of migrant and seasonal agricultural workers. The Association's membership provides dropout recovery and placement in postsecondary education or employment to over 7,000 participants each year through the HEP programs. CAMP provides economic and financial support and other non-financial support services to first year college freshmen, most of whom are the first in their families to seek a college degree. The Association provides scholarships and sponsors summer internships for college students from farmworker families. The Association also provides professional development for its members, ensuring the effectiveness of HEPs and CAMPs.



According to 2016-2017 CAMP data presented by the U.S. Office of Migrant Education (OME)*:

In FY 2016 - 2017, CAMP:

- **88.2% of all CAMP** participants successfully completed their first year at an IHE (24 credits earned and in good academic standing).
- **96.6% of all students that successfully completed CAMP** (24 credits earned and in good academic standing) were enrolled in an IHE the following year. This remarkable success surpasses OME's goal of 85.5% by 11.1%.

According to 2016-2017 HEP data presented by the U.S. Office of Migrant Education (OME):**

In FY 2016 – 2017 HEP:

- **67.5% of HEP students** who completed their course of study earned a high school equivalency diploma (HSED) or its equivalent.
- **85.6% of HEP students** that earned their GED or its equivalent enrolled in an IHE, improved their job status or enrolled in the military; exceeding OME's goal of 80% by 5.6%.

*US Department of Education CAMP 2018 Report to Congress: <https://www2.ed.gov/programs/camp/performance.html>

** US Department of Education HEP 2018 Report to Congress: <https://www2.ed.gov/programs/hep/performance.html>

For more information on the National HEP/CAMP Association please visit our website www.hepcampassociation.org or contact:

Michelle Kelley, National HEP/CAMP Association President
208-426-3095 mkelley@boisestate.edu

Irene Bueno, Washington Representative
(202) 540-1070 ibueno@nvgllc.com

College Assistance Migrant Programs	High School Equivalency Programs
ARIZONA	CALIFORNIA
Arizona Western College	California State University, Long Beach
Arizona State University	Cambridge Academies
CALIFORNIA	Central Valley Opportunity Center, Inc.
California State University, Bakersfield Foundation	California State University, Fullerton
California State University, Fresno Foundation	California State University, Bakersfield
California State University, Long Beach	California State University, Sacramento
California State University, Monterey Bay	Hartnell Community College
California State University, Sacramento	Mendocino-Lake Community College
California State University, San Marcos	Proteus, Inc.
Mendocino Lake Community College	San Diego County SER/Jobs for Progress Inc.
Rancho Santiago Community College District/Santiago Canyon College	SER Jobs for Progress Inc. San Joaquin Valley
COLORADO	Sonoma County Junior College
Adams State University	West Hills Community College
Metropolitan State University of Denver	COLORADO
University of Colorado, Boulder	Regents of the University of Colorado
FLORIDA	FLORIDA
Miami Dade College	Miami Dade College
University of South Florida	University of South Florida
GEORGIA	GEORGIA
Abraham Baldwin Agricultural College	Abraham Baldwin Agricultural College
University of North Georgia	University of North Georgia
Valdosta State University	IDAHO
IDAHO	Boise State University
Boise State University	Community Council of Idaho, Inc.
Lewis-Clark State College	KANSAS
University of Idaho	Fort Scott Community College
KANSAS	KENTUCKY
Fort Scott Community College	Somerset Community College
Kansas State University	LOUISIANA
University of Kansas Heartland	Louisiana Delta Community College
MICHIGAN	University of Louisiana at Monroe
Michigan State University	MASSACHUSETTS
Western Michigan University	EDCO Collaborative
MISSOURI	MISSISSIPPI
Crowder College	Mississippi Valley State College
Drury University	NEW MEXICO
NEW MEXICO	HELP New Mexico, Inc.
New Mexico State University	Northern New Mexico College
University of New Mexico	Three Rivers Education Foundation
Northern New Mexico College	University of New Mexico - Taos
NEW YORK	University of New Mexico
Chemeketa Community College	NORTH CAROLINA
Oregon State University	Wake Technical Community College
Treasure Valley Community College	OREGON
Portland Community College	Chemeketa Community College District
PENNSYLVANIA	Oregon State University
Millersville University of Pennsylvania	Portland Community College
PUERTO RICO	Treasure Valley Community College
Inter-American University of Puerto Rico San German Campus	PUERTO RICO
TEXAS	Universidad del Este
El Paso Community College District	TEXAS
St. Edward's University, Inc.	El Paso Community College District
Texas A&M International University	Texas State Technical College Harlingen
University of Texas – El Paso	University of Texas - Rio Grande Valley
University of Texas - Rio Grande Valley Edinburg	University of Texas at El Paso
University of Texas - Rio Grande Valley Brownsville	WASHINGTON
West Texas A&M University	Central Washington University
WASHINGTON	Columbia Basin Community College
Heritage University	Heritage University
Central Washington University	Washington State University
Washington State University	WISCONSIN
Columbia Basin College	Madison Area Technical College
Wenatchee Valley College Foundation	
University of Washington	
Eastern Washington University	



Children of agricultural workers face tremendous obstacles in completing high school and pursuing higher education. These students move frequently and these frequent disruptions contribute to a high rate of drop-outs and a low rate of college attendance. For nearly 50 years, the **High School Equivalency Program (HEP)** and the **College Assistance Migrant Program (CAMP)** have enabled children of agricultural workers to pursue higher levels of education and secure jobs that allow them to become successful and contributing members of American society.

HEP helps students obtain a High School Equivalency Diploma/Credential (HSED) and, subsequently, begin postsecondary education, enter military service, or obtain employment. HEP grantees provide intensive instruction and support to students who have not completed high school.

CAMP assists students in successfully completing their first academic year of college and continuing at a postsecondary education institution. CAMP grantees provide academic support, stipends, and other support services necessary to ensure that students succeed in college.

The HEP/CAMP programs are authorized under section 418(A) of the *Higher Education Act* and administered by the United States Department of Education's Office of Migrant Education (OME). Currently, there are 101 HEP/CAMP programs (50 HEP and 51 CAMP). The Department of Education awards *competitive* five-year grants to Institutions of Higher Education (IHEs) or private non-profit organizations that work in cooperation with IHEs. Congress recognized the importance of HEP/CAMP programs when it increased the program's authorization level to \$75 million in the *Higher Education Opportunity Act of 2008 (HEOA)*.

- **HEP/CAMP PROGRAMS ARE PROVEN EFFECTIVE AND ACCOUNTABLE:** The High School Equivalency (HSE) passage rates for HEP students are substantially higher than those of other HSE preparation programs, and retention rates for first year students served by the CAMP program are significantly higher than those of most IHEs. During the 2016-2017 project year, **67.5%** of HEP students who completed their course of study earned a HSE or its equivalent. In 2016-2017, **88.2%** of all CAMP participants successfully completed their first year at an IHE (24 credits and in good academic standing) and **96.6%** continued on to their second year in college.
- **HEP/CAMP PROGRAMS ARE UNIQUE AND NOT DUPLICATIVE:** HEP/CAMP programs are the *only* federal programs that help the children of agricultural workers – a unique population of students that face tremendous obstacles – obtain their HSED and pursue higher education. HEP/CAMP programs are not duplicative of any other federal program.
- **DEMAND FOR HEP/CAMP PROGRAMS:** In the most recent grant competitions, the U.S. Department of Education received many more HEP/CAMP grant applications from across the country than available spots. Few of the applications were funded as a result. CAMP received 33 applications and 18 project were funded and 16 were not. HEP received 29 applications and 16 were funded and 13 were not funded.
- **GOOD FOR THE ECONOMY AND RURAL COMMUNITIES:** HEP/CAMP programs help students get better jobs and therefore contribute more to the tax base in their community. The HEP/CAMP grant awards to IHEs and non-profit organizations bring jobs and spur economic activity in the local communities where grants are awarded, especially in rural areas where many of these programs are located.

APPROPRIATIONS HISTORY

Funding History (in millions)	FY 2017	FY 2018	FY 2019	FY 2020 House Recommendation	FY 2020 National HEP/CAMP Association Proposal
HEP/CAMP	\$44.6	\$44.6	\$44.6	\$50 million	\$50 million

“The CAMP program has allowed the calluses in my hands to heal and my mind to grow.”

*Concepción has blossomed from a shy college freshman into an outgoing engineer. After interning at the Texas Department of Transportation for two summers, Concepción received job offers from nine different corporations in the United States, Canada, and Mexico, all eager to bring her on board after her graduation. **Concepción Mendoza, Civil Engineering Technology, New Mexico State University CAMP***

Contact Information:

Irene Bueno
Washington Representative
National HEP/CAMP Association
c/o NVG, LLC
1640 Rhode Island Avenue NW
Suite 700
Washington, DC 20036
202.540.1070
ibueno@nvgllc.com

Michelle Kelley
President
National HEP/CAMP Association
208-426-309
mkelley@boisestate.edu

**The National HEP/CAMP Association is a nonprofit membership organization comprised of High School Equivalency Programs (HEP) and College Assistance Migrant Programs (CAMP) located throughout the United States. For more information, please see our website <http://www.hepcampassociation.org/>*

6/25/19