

# New Graduate Student Orientation

**CSUB Graduate Studies**

**20+ Graduate Programs | 19+ Credentials | 6+ Professional Certificates | 3+ Academic Certificates**  
**2,000+ Graduate Students | 12,000+ Graduate Alum**

---

**Spring 2026**

**Welcome!**



CALIFORNIA STATE UNIVERSITY  
**BAKERSFIELD**

# Welcome & Introductions

## Dr. Elizabeth Adams:

*Interim Associate Vice President for Academic Affairs and Dean of Academic Programs; Dean of Antelope Valley Campus*

## Graduate Student Center:

- Martha Manriquez, *Coordinator, Graduate Student Center*
- Abbie Kirkindoll & Samantha Zamudio, *Student Assistants*
- Mario Enriguez, *Graduate Studies ASI Director*

## Graduate Program Directors:

- *Introduce yourself in the chat!*



CALIFORNIA STATE UNIVERSITY  
**BAKERSFIELD**  
Graduate Student Center

# Welcome & Introductions Cont'd...

## Graduate Students:

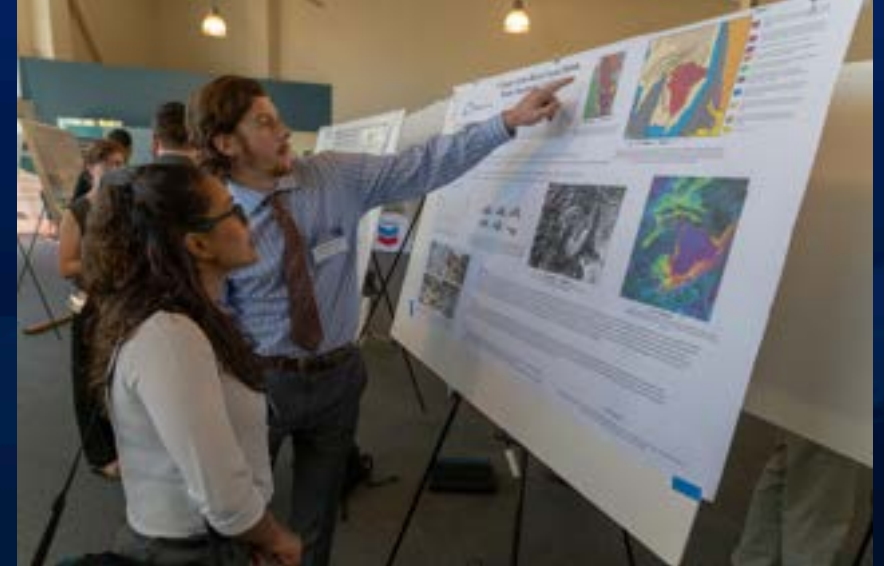
- Please be sure to introduce yourself in the chat...
- Your Name...
- Your Graduate Program...
- Your Why (*Why* are you in Graduate School?)...



# Welcome *cont'd...*

- *Congratulations! You are joining a special group!*
- **By the numbers...**
  - Only 13.1% of U.S. population hold a Master's degree, Professional degree, or Doctorate.
  - Less than 2% of U.S. population hold a Doctoral degree

(Note. ...for those of you joining the EdD and DNP programs).



# Graduate Student Center Services

- ✓ **New Student Orientation** (*you are here!*)
- ✓ **Professional Development Workshops**
- ✓ **Events**
- ✓ **Graduate Student Lab & Lounge\***
  - ✓ **Computers/Printers/Poster Printers\***
- ✓ **Conference Room\***
  - ✓ **New PC (Big Screen)**
- ✓ **Fellowships & Awards**
  - ✓ **Equity Fellowship \$20k (applications re-open in March 2025)**
  - ✓ **Faculty Diversification Fellowship Program (applications re-open in Spring 2025)**
  - ✓ **Sally Casanova Scholars California Pre-Doctoral Program**
  - ✓ **The California State University (CSU) Chancellor's Doctoral Incentive Program (CDIP)**
- ✓ **Answers to Policy and Procedure Questions**
- ✓ **Publication of Graduate Newsletter**
- ✓ **Dell laptops available for check out**
- ✓ **CSUB Graduate Student-Mentor Opportunities**
  - ✓ **Runner Alumni Mentor Program (RAMP)**

*\*by appointment only*

**Contact:**  
**[gsc@csub.edu](mailto:gsc@csub.edu)**

# Other Programs



Kenya Espinoza  
Sally Casanova Scholar



Dayana Aguilar-Hernandez  
Honorable Mention  
Sally Casanova Scholar

- **Sally Casanova Scholars California Pre-Doctoral Program** is designed to increase diversity within the pool of university faculty by supporting the doctoral aspirations of students in the California State University (CSU). Travel funds, development funds, and summer research opportunities enable students to explore and prepare to succeed in doctoral programs in their chosen field of study.
- **The California State University (CSU) Chancellor's Doctoral Incentive Program (CDIP)** is a forgivable loan program which aims to increase the number of promising doctoral students applying for future CSU instructional faculty positions. In addition to a forgivable loan, the program offers mentorship by CSU faculty as well as mini-grants and travel funds to support collaborative teaching, research, and service.

*The application period for the CDIP program will open mid-academic year and completed applications are due to the Graduate Student Center on **February 2026-CSUB Deadline**. Please find additional CDIP program and deadline information*



# Other Programs *Cont'd...*

- **Runner Alumni Mentor Program** (RAMP) pairs juniors, seniors and **graduate students** with a CSUB alumni professional for an academic year of career-preparation coaching.
  - [RAMP Webpage](#)

A hand holding a white marker is writing the question "What's Your Mission?" in white chalk on a dark chalkboard. The text is written in a casual, slightly irregular font. The hand is positioned at the bottom right of the text, with the marker tip touching the end of the word "Mission?".

What's Your  
Mission?

# Unit of Graduate Programs

## Our Mission Statement

The mission of the Division of Graduate Programs at CSUB is to prepare students with discipline-specific intellectual skills for employment or continuing education.

Through its post baccalaureate programs, the graduate division provides all students numerous opportunities to achieve academic excellence; explore diverse ideas; develop a passion for higher learning; and engage with graduate faculty and the community.

# Unit of Graduate Programs

## Division Goals

- Provide campus-wide leadership in graduate student affairs and academic policies;
- Develop and sustain a graduate culture with a sense of purpose, direction, and cohesiveness;
- Ensure that all graduate programs are current and meet high quality standards and demonstrate student learning; and
- Build an inclusive community of scholars dedicated to the quest for new knowledge and higher learning both within and outside the classroom.

# Who We Are...*in a snapshot...*

## CSUB Graduate Studies

20+ Graduate Programs | 2,000+ Current Graduate Students | 12,000+ Graduate Alum

19+ Credentials | 6+ Professional Certificates | 3+ Academic Certificates

### **Arts & Humanities**

M.A. History, M.A. English, M.A. Spanish

### **Business & Public Administration**

M.S. Health Care Administration, Master of Business Administration, Master of Public Administration

### **Natural Sciences, Mathematics, & Engineering**

M.S. Biology, M.S. Geology, M.S.N to D.N.P. and D.N.P. Nursing

### **Social Sciences & Education**

M.S. Counseling Education, M.S. Educational Counseling, M.A. Educational Administration, M.A. Special Education, Master in Social Work, Ed.D., Educational Leadership, Credentials

### **Extended Education**

M.A. Curriculum & Instruction, M.S. Kinesiology, Master Social Work, M.S. Computer Science



## 6 Tips for Success!

- *Carve out the time (to study, write, ...do the work!)*
  - *The Writing Hours*
- *Find your study area (CSUB Library, GSC, Coffee Shop, home, etc.)*
- *Be organized (files, etc.)*
- *Seek help (utilize the resources from GSC, University resources, etc.)*
- *Work-life balance (take care of yourself)*
- *Remember your WHY (write it down somewhere and revisit it)*

*Connect with us!*

# Division of Graduate Programs

**Office:** The Graduate Student Center (GSC)

**Phone:** (661) 654-2786

**Email:** [gsc@csub.edu](mailto:gsc@csub.edu)

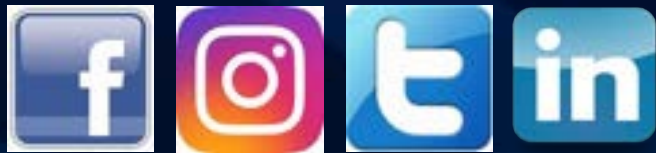
GSC Website:

[www.csub.edu/graduatestudentcenter/](http://www.csub.edu/graduatestudentcenter/)

Graduate Programs:

[www.csub.edu/graduatestudentcenter/graduate-programs](http://www.csub.edu/graduatestudentcenter/graduate-programs)

**Social Media:** @CSUBGSC



# Thank You

---



# Services & Support for Graduate Students

## Presenters:

- **Mario Enriguez, Mike Kwon, Anthonio Reyes** Associated Students Inc. <https://www.csub.edu/asi/>
- **Kirstin Lattimore**– Library - Online research & E-Theses Submission: <https://www.csub.edu/library/>
- **Lauren Hedlund** – Health Center: Immunization, Information and Services Available: [www.csub.edu/healthcenter](http://www.csub.edu/healthcenter)
- **Eric Lord** - Counseling Center: Services & Group Workshops: [www.csub.edu/counselingcenter](http://www.csub.edu/counselingcenter)
- **Allan Williams** – Office of Civil Rights and Compliance: [Title IX | California State University, Bakersfield](#)
- **Marrian Angeles** - Dreamers Resource Center, Multicultural Alliance & Gender Equity Center: <https://www.csub.edu/dreamers/>, <https://csub.edu/magec/>
- **Lenny Perez** – Center for Accessibility and Essential Needs: <https://www.csub.edu/ssd>
- **Katrina Gilmore** – CECE: Career Education and Community Engagement: [www.csub.edu/cece](http://www.csub.edu/cece)



**"Students Working For Students."**

# About Me

**Director of Graduate Students**

**Bio:**

**I was originally from Shafter, CA. Currently working as a Financial Reporting & Analytics Intern at Kaiser Permanente.**

**Prior Education:**

**B.A. Psychology, University of Southern California**

**Current Program:**

**Master of Science in Health Care Administration**



# About ASI

ASI is specifically designed for you, the students. We are your representative government at CSUB. We exist to provide an official voice through which student opinions and issues may be expressed regarding local, state, and federal issues.

ASI represents the collective voice of over 10,000 students at CSU Bakersfield. In addition to students, we help represent over 400,000 students across the CSU system.



# Board of Directors

The ASI Board of Directors is  
comprised of 5 Executive Officers,  
1 Chairperson, and 16 Directors.

## Executives

President  
Executive Vice President  
Vice President of Campus Life  
Vice President of Finance  
Vice President of University Affairs

## Directors

Director of Accessibility and Essential Needs  
Director of ASI Outreach  
Director of Athletics Engagement  
Director of Clubs and Organization Outreach  
Director of CSUB-AV  
Director of Diversity and Inclusion  
Director of Graduate Students  
Director of Student Housing Relations  
Director of Sustainability  
Director of Transfer Students  
Director of Veterans Affairs  
Director of Students with Disabilities

***Academic College Directors:***  
Natural Sciences, Mathematics, and  
Engineering  
Arts and Humanities  
Business & Public Administration  
Social Sciences and Education

# Committees

## University Affairs

The University Affairs Committee is responsible for organizing and addressing all University-related issues that pertain to students.

## Finance

The Finance Committee is responsible for all funds that relate to the organization and assist clubs/organizations.

## Campus Life

The Campus Life Committee plans, publicizes, and coordinates culturally and socially unified events and activities for the student body.

**ASI is busy advocating for  
YOU!**



# Lobby Corps

Lobby Corps exists to serve as a voice for students when lobbying local, state, and national legislators in regards to all issues pertaining to higher education, the CSU System, or California State University of Bakersfield.


The ASI Board works continuously so that your voice is heard on campus and in the halls of the Capitol in Sacramento and Washington D.C.



# Rowdy Bunch

Rowdy Bunch is a volunteer program that is associated with CSUB ASI. This program hosts events that help students get involved on campus and build school spirit. It's a great way for students to connect, volunteer, and make the most of their time at CSUB.





# **Join our Board Meetings!**

**All ASI Board of Directors meetings are open to the public and welcome all students to come and attend our meetings.**

**The public comment section of the agenda is the place for you to ask questions, provide feedback or share concerns.**

**ASI Board of Director meetings are held on Fridays from 3pm to 5pm inside ITV-C Studio and virtually on Zoom.**



# Contact Us!

**Phone: (661) 654-2418**

**Student Union Room 149**

**Hours: 8 am to 5 pm Instagram:  
@csub\_asl**

**Mario Enriguez**

**Director of Graduate Students**

**Email: [menriguez@csub.edu](mailto:menriguez@csub.edu)**

# Services & Support for Graduate Students

## Presenters:

- **Kirstin Lattimore** – Library - Online research & E-Theses Submission: <https://www.csub.edu/library/>
- **Lauren Hedlund** – Health Center: Immunization, Information and Services Available: [www.csub.edu/healthcenter](http://www.csub.edu/healthcenter)
- **Eric Lord** - Counseling Center: Services & Group Workshops: [www.csub.edu/counselingcenter](http://www.csub.edu/counselingcenter)
- **Allan Williams** – Office of Civil Rights and Compliance: [Title IX | California State University, Bakersfield](#)
- **Marrian Angeles** - Dreamers Resource Center, Multicultural Alliance & Gender Equity Center: <https://www.csub.edu/dreamers/>, <https://csb.edu/magec/>
- **Lenny Perez** – Center for Accessibility and Essential Needs: <https://www.csub.edu/ssd>
- **Katrina Gilmore** – CECE: Career Education and Community Engagement: [www.csub.edu/cece](http://www.csub.edu/cece)



# New Graduate Student Orientation: Walter W. Stiern Library & AV

---

Kirstin Lattimore  
SS&E Librarian



# Services & Resources

---

- Library webpage: [csu.edu/library](https://csu.edu/library)
- Borrowing privileges:  
<https://csu.libguides.com/borrowingandaccess/students>
- Course reserves (search by course or instructor)
- [Book a group study room](#)
- [24/7 library chat](#) - talk to a real person about your research question
- 24 Hour study room: <https://csu.libguides.com/rooms>

# Resources

---

Library databases - [csu.edu/library](https://csu.edu/library) “Databases by subject”

- Locate peer-reviewed research articles, dissertations, and more
- Find your subject guide by going to “Library Guides” - full of helpful information

OneSearch - [csu.edu/library](https://csu.edu/library)

- Your library catalog
- Search for books, video, and more
- May also submit a Resource Sharing request - must be logged in to do so.  
Search for the title of the article or book. Then you will be prompted to click a link and brought to the Resource Sharing webform.

# Antelope Valley (AV)

---

Library Services webpage: <https://www.csub.edu/av/csub-av-library.shtml>

- Research assistance - Kristine Holloway is the AV librarian and is available to help
- AV library have their own course reserves
- You may also use the 24/7 chat to chat with a live person
- More information about AV library is available via the library guide: <https://cslibguides.com/AVcampus>

# Institutional Repository (IR)

---

- Once you complete your program, you'll be required to self-submit your thesis, project, or dissertation via the ProQuest ETD tool
- Submitted work will then be made available globally to students, researchers, and the general public
- Please view the [Library Guide here](#) for more detailed information
- I am also glad to assist you in your self-submission! Please reach out to me if you have questions.

# Reach Out

- Kirstin Lattimore - SS&E
- Email: [klattimore1@csub.edu](mailto:klattimore1@csub.edu)
- Office: WSL 116C
- Phone: 661/654-3235
- Research and reference assistance is available through 24/7 chat on the library website, or by appointment
- If my availability does not work for you, please reach out via email

KIRSTIN LATTIMORE

She/her/hers



Email Me

Schedule Appointment

Summer 2025 Office Hours

Monday 10am - 12 pm

Tuesday 10am - 12pm

Thursday 10am - 12 pm

**Contact:**

Walter. W. Stiern Library

WSL 116C

661-654-3235

# Services & Support for Graduate Students

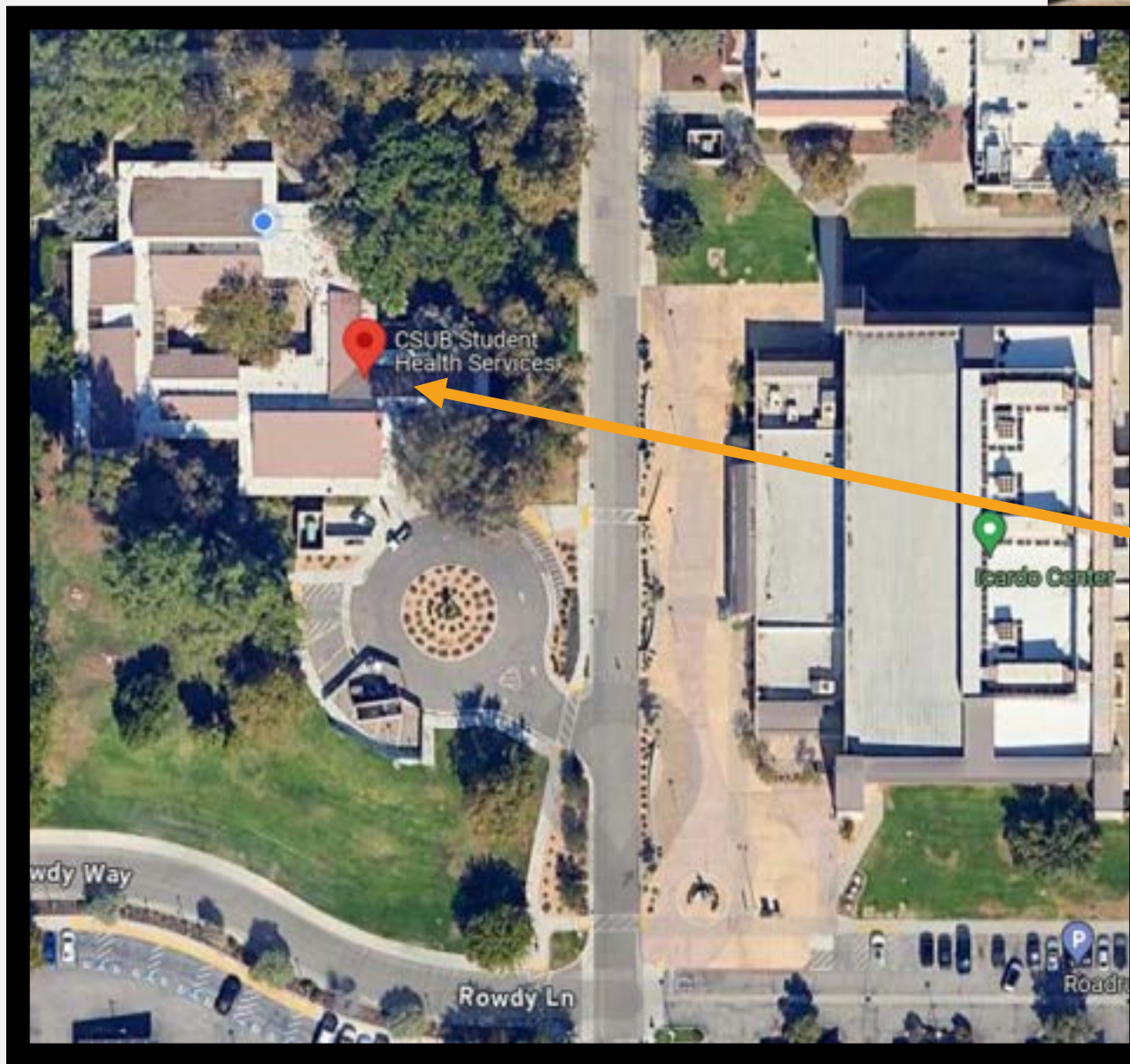
## Presenters:

- **Lauren Hedlund** – Health Center: Immunization, Information and Services Available: [www.csub.edu/healthcenter](http://www.csub.edu/healthcenter)
- **Eric Lord** - Counseling Center: Services & Group Workshops: [www.csub.edu/counselingcenter](http://www.csub.edu/counselingcenter)
- **Allan Williams** – Office of Civil Rights and Compliance: [Title IX | California State University, Bakersfield](http://Title IX | California State University, Bakersfield)
- **Marrian Angeles** - Dreamers Resource Center, Multicultural Alliance & Gender Equity Center: <https://www.csub.edu/dreamers/>, <https://csub.edu/magec/>
- **Lenny Perez** – Center for Accessibility and Essential Needs: <https://www.csub.edu/ssd>
- **Katrina Gilmore** – CECE: Career Education and Community Engagement: [www.csub.edu/cece](http://www.csub.edu/cece)



**STUDENT  
HEALTH SERVICES**  
CSU BAKERSFIELD

CSUB STUDENT HEALTH SERVICES



## STAFF:

PHYSICIANS  
NURSE PRACTITIONER  
NURSING STAFF  
REFERRAL SPECIALISTS  
CLINICAL ASSISTANTS  
IN-HOUSE PHARMACY  
IN-HOUSE LAB  
HEALTH EDUCATION  
DEPARTMENT

## SERVICES:

MEDICAL EVALUATIONS  
HEALTH EDUCATION  
WELLNESS VENDING MACHINE  
FAMILY PLANNING SERVICES  
LAB TESTS  
X-RAY REFERRALS  
FIRST AID  
TELEHEALTH  
STI TESTING  
MEDICATIONS  
PHYSICALS  
IMMUNIZATIONS  
...AND MORE!

**NO  
INSURANCE  
NEEDED!**

**EVERYTHING  
IN RED IS  
FREE!**

# ADDITIONAL OFFERINGS:



## Get your FREE box of Narcan Nasal Spray\*!

Narcan is a life-saving medication that can **reverse an overdose from opioids** - including heroin, fentanyl and prescription opioid medications - when given in time. Narcan is easy to use and small to carry.

Upstander  
Video:



How & When to  
use Narcan:



**AVAILABLE IN THE STUDENT HEALTH SERVICES  
HEAL HUB DURING NORMAL BUSINESS HOURS.**

\*Students who receive the nasal spray should watch the Upstander video soon after to be prepared in case of an emergency.

\*Free Narcan is made available by SB 367. Free boxes available to students only while supplies last. Fentanyl test strips are also free and available for pick up from Student Health Services.

# LACTATION ROOM

CSUB Student Health Services offers a private and secure room for expressing human milk or feeding an infant.

The Lactation Room is available to all students, staff, faculty and campus guests during our normal business hours.

**WE DO NOT OFFER A PLACE TO STORE EXPRESSED MILK.**

Questions? Call the front desk:  
661.654.2934

\*Check in at the front desk upon arrival to utilize the lactation room.



# BAKERSFIELD: IN-PERSON AND DROP-IN'S

OFFICE HOURS:  
MONDAY – FRIDAY  
8 AM – 5 PM

APPOINTMENT HOURS:  
MONDAY – FRIDAY  
8:15 AM – 11:30 AM  
1:00 PM – 4:30 PM

BAKERSFIELD CAMPUS:  
661-654-2394

## CSUB AV STUDENT HEALTH SERVICES

**NOW AVAILABLE**

at NO COST (all covered by student fees)



**IMMUNIZATIONS**  
Hepatitis B,  
TB skin test



**MD VISITS**  
Physicals,  
check-ups &  
more!



**LAB WORK**  
As ordered  
by physician



**X-RAY**  
TB Chest x-ray  
or as ordered  
by physician

### HOW TO SCHEDULE:

1. Call 661.654.2394.
2. Let them know that you're a CSUB AV student who needs a referral and the reason for your visit.
3. Once approved, take your picture ID to Summit Urgent Care to receive services. They are open daily from 8 AM - 6 PM



# **IMMUNIZATION REQUIREMENT BEGINNING SPRING 2023**

## **HEPATITIS B**

(HEP B)

3 DOSES; REQUIRED FOR ALL STUDENTS AGE 18 AND YOUNGER;  
POSITIVE TITER ALSO ACCEPTED.

**MEDICAL AND RELIGIOUS EXEMPTIONS WILL BE  
ACCEPTED IN LIEU OF VACCINATION RECORD**

**UPLOAD YOUR DOCUMENTS TO:**  
**health.csub.edu**

Complete login/upload instructions can be found at  
[linktr.ee/csubshsoutreach](http://linktr.ee/csubshsoutreach)

### **FOR QUESTIONS:**

#### **EMAIL**

[immunizations@csub.edu](mailto:immunizations@csub.edu)

#### **CALL**

661-654-2394

**PROOF OF VACCINATION/EXEMPTION MUST BE  
PROVIDED TO CLEAR REGISTRATION HOLDS.**

PLEASE VISIT OUR WEBSITE FOR MORE INFORMATION:

**[WWW.CSUB.EDU/HEALTHCENTER](http://WWW.CSUB.EDU/HEALTHCENTER)**



CALIFORNIA STATE UNIVERSITY  
**BAKERSFIELD**

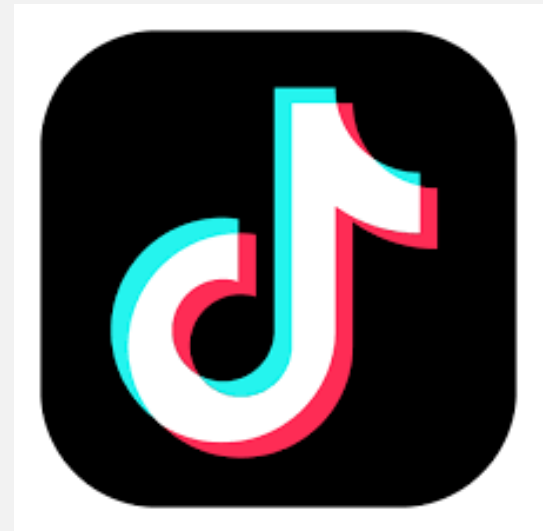
Student Health Services

**YOU WILL NOT BE ABLE TO  
REGISTER FOR NEXT  
SEMESTER'S CLASSES UNTIL  
THE REQUIREMENT HAS  
BEEN FULFILLED.**

FOLLOW US ON SOCIAL MEDIA FOR  
UPDATES, CONTESTS AND PRIZES!



@csubstudenthealthservices



@csubstudenthealthcenter

# Services & Support for Graduate Students

## Presenters:

- **Eric Lord** - Counseling Center: Services & Group Workshops: [www.csub.edu/counselingcenter](http://www.csub.edu/counselingcenter)
- **Allan Williams** – Office of Civil Rights and Compliance: [Title IX | California State University, Bakersfield](http://TitleIX|CaliforniaStateUniversity,Bakersfield)
- **Marrian Angeles** - Dreamers Resource Center, Multicultural Alliance & Gender Equity Center: <https://www.csub.edu/dreamers/>, <https://csb.edu/magec/>
- **Lenny Perez** – Center for Accessibility and Essential Needs: <https://www.csub.edu/ssd>
- **Katrina Gilmore** – CECE: Career Education and Community Engagement: [www.csub.edu/cece](http://www.csub.edu/cece)



# CSUB Counseling Center

Eric Lord, LCSW  
Director

Located in  
Rivendell





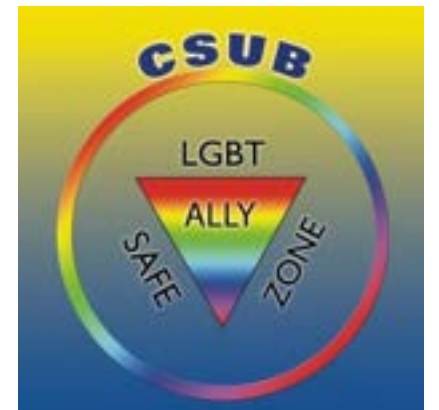
# Services Offered – Spring 2026

- Individual Counseling
  - Mental Health Concerns
  - Academic concerns
  - Relationship Concerns (Friends, Family, Significant Other)
- Group Counseling
- Support Groups
  - Women Self-Esteem
  - Men's Group
  - Veterans' Group
  - Guardian Scholars Program
  - Multicultural Alliance and Gender Equity Center (MAGEC)
- Workshops
  - Stress and Academics
  - Time Management
  - Procrastination
- General Studies Course
  - Peer Education (suicide prevention)

# Trainings

Question Persuade Refer (QPR) -  
Suicide Prevention Training

Safe Zone Program – University  
wide network of allies (staff and  
faculty)



# Important!!!

- **Counseling is Confidential.**
- **No insurance or payment required. Counseling is paid for through tuition fees.**
- **All providers are licensed therapists**
  - 3 - Marriage & Family Therapists (LMFT)
  - 3 – Clinical Social Workers (LCSW)
  - 1 – Clinical Psychologist (Ph.D.)

# Special Events

## CSUB Candlelight Event

- In support of individuals and loved ones impacted by mental health concerns and suicide

**Fall 2026**

**Apr. 22, 2026**

## CSUB Mental Health Awareness Event

- A day of activities, food, and music to bring awareness of the importance in taking care of one's health

# Victim's Advocate

Enly Solis

---



# Confidential Support

- Sexual Harassment
- Sexual Misconduct
- Sexual Assault
- Stalking
- Domestic Violence
- Dating Violence
- Sexual Exploitation/Human Trafficking
- As the victim's advocate, I can provide confidential supportive services to all students, staff, and faculty members here on campus.
- Victims have a right to have an advocate that understands these complexities.
- Having a confidential support person helps build trust, empowers the individual, and helps to restore hope.

# Supportive Services

- Advocacy
- Safety Planning
- Reporting to Title IX
- Reporting to UPD or BPD/KCSO/
- Reporting to Antelope Valley Sherriif
- Housing
- Emergency Shelter
- Basic Needs (food/ clothing/hygiene)
- Restraining Orders
- Court Accompany
- Resources on and off campus

# Location

- Rivendell Building inside the Counseling Center
- Students/Staff/ Faculty can call me directly : 661-654-3371
- Email : [esolis1@csb.edu](mailto:esolis1@csb.edu)
- Website: [www.csb.edu/advocate](http://www.csb.edu/advocate)
- IG: campusadvocatecsb



# Services & Support for Graduate Students

## Presenters:

- **Allan Williams** – Office of Civil Rights and Compliance: [Title IX | California State University, Bakersfield](#)
- **Marrian Angeles** - Dreamers Resource Center, Multicultural Alliance & Gender Equity Center: <https://www.csub.edu/dreamers/>, <https://csb.edu/magec/>
- **Lenny Perez** – Center for Accessibility and Essential Needs: <https://www.csub.edu/ssd>
- **Katrina Gilmore** – CECE: Career Education and Community Engagement: [www.csub.edu/cece](http://www.csub.edu/cece)



# OFFICE OF CIVIL RIGHTS AND COMPLIANCE

---

Know Your Rights,  
Resources, and Responsibilities



CALIFORNIA STATE UNIVERSITY  
**BAKERSFIELD**

# DISCRIMINATION, HARASSMENT, AND RETALIATION

---

Members of the CSU Bakersfield community have a right to work, live, and learn in an environment free from unlawful discrimination based on a protected status. CSUB is committed to maintaining an environment where no student, employee, visitor, or recipient of services and/or benefits provided by CSUB shall be subjected to any form of prohibited discrimination in any CSUB program or activity.

CSUB takes allegations of discrimination very seriously. Complaints alleging discrimination, harassment, and retaliation will be addressed in a timely and appropriate manner. If the complaints have merit, CSUB will promptly take actions to prevent recurrence and remedy the effects of the discrimination, harassment, or retaliation.

# Meet the CRCO Team

Allan Williams – AVP of CRCO TIX/DHR Coordinator |  
[awilliams122@csub.edu](mailto:awilliams122@csub.edu)

Jorge Villatoro – Deputy Title IX Coordinator |  
[jvillatoro8@csub.edu](mailto:jvillatoro8@csub.edu)

Celeste Seaton – Title IX/DHR Investigator |  
[cseaton2@csub.edu](mailto:cseaton2@csub.edu)

Gyu Kim – Conflict Resolution Manager |  
[gkim11@csub.edu](mailto:gkim11@csub.edu)

Enly Solis – Title IX Victim's Advocate (Confidential  
Resource) | [esolis1@csub.edu](mailto:esolis1@csub.edu)



# Reporting an Incident

- You can report if you:
  - Are a survivor of harassment or assault
  - Witness inappropriate behavior
  - Want to support a friend
- **Where to Report:**
  - **Online:** [csub.edu/civil-rights-compliance/title-ix/](https://csub.edu/civil-rights-compliance/title-ix/)
  - **In Person:** Administration West Building, Room 102A
  - **Email:** [TitleIX@csub.edu](mailto:TitleIX@csub.edu)
  - **Note:** Reports can be **anonymous**.

## Incident Report Form

**REPORTING AN INCIDENT**

This report does not automatically initiate a Title IX Investigation. It provides you with an opportunity to inform the Title IX/DHR Coordinator of your experience and to receive support and information about your options.

Filing a report serves as official notice to the University and authorizes Title IX key personnel to initiate a preliminary inquiry into the information and allegations contained within the report.

Students, staff, faculty, or third parties wishing to file a report can use this form.

[INCIDENT REPORTING FORM](#)

Scan the QR code to visit our website



# Support for Pregnant Students

- Title IX protects you from discrimination due to:
  - Pregnancy
  - Childbirth
  - Recovery from childbirth
- You have the right to:
  - Reasonable adjustments (e.g., excused absences, larger desks)
  - Lactation spaces
  - Academic flexibility
- How to Request Support:
  - Complete request form: [csb.edu/civil-rights-compliance/student-pregnancy-support](https://csb.edu/civil-rights-compliance/student-pregnancy-support)
  - Contact: [TitleIX@csb.edu](mailto:TitleIX@csb.edu)



**SCAN QR CODE**



# Services & Support for Graduate Students

## Presenters:

- **Marrian Angeles** - Dreamers Resource Center, Multicultural Alliance & Gender Equity Center: <https://www.csub.edu/dreamers/>, <https://csup.edu/magec/>
- **Lenny Perez** – Center for Accessibility and Essential Needs: <https://www.csub.edu/ssd>
- **Katrina Gilmore** – CECE: Career Education and Community Engagement: [www.csub.edu/cece](http://www.csub.edu/cece)



Dreamers Resource Center  
Multicultural Alliance & Gender Equity Resource Center

# MULTICULTURAL ALLIANCE & GENDER EQUITY CENTER (MAGEC) AND DREAMERS RESOURCE CENTER (DRC)





MULTICULTURAL ALLIANCE AND  
GENDER EQUITY RESOURCE CENTER  
CSU BAKERSFIELD™

# What is 'MAGEC'?

A center that aims to uplift, validate, and support students from various backgrounds such as:

- Cultural backgrounds
- Religious beliefs
- Sexual orientations
- Gender identities

# MAGEC RESOURCES



**COURSE  
TEXTBOOKS**



**STUDENT  
AFFINITY  
LOUNGES**



**PRIVATE  
LACTATION  
ROOM**



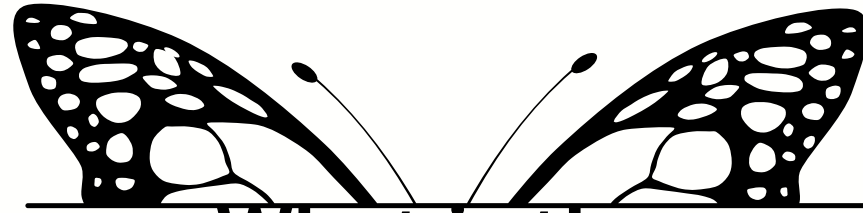
**SNACK  
SPACE**



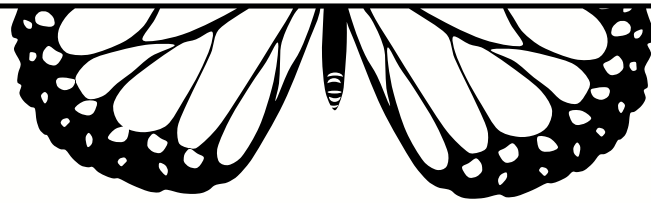
**SNACK  
SPACE**



**JAI'S LIBRARY**



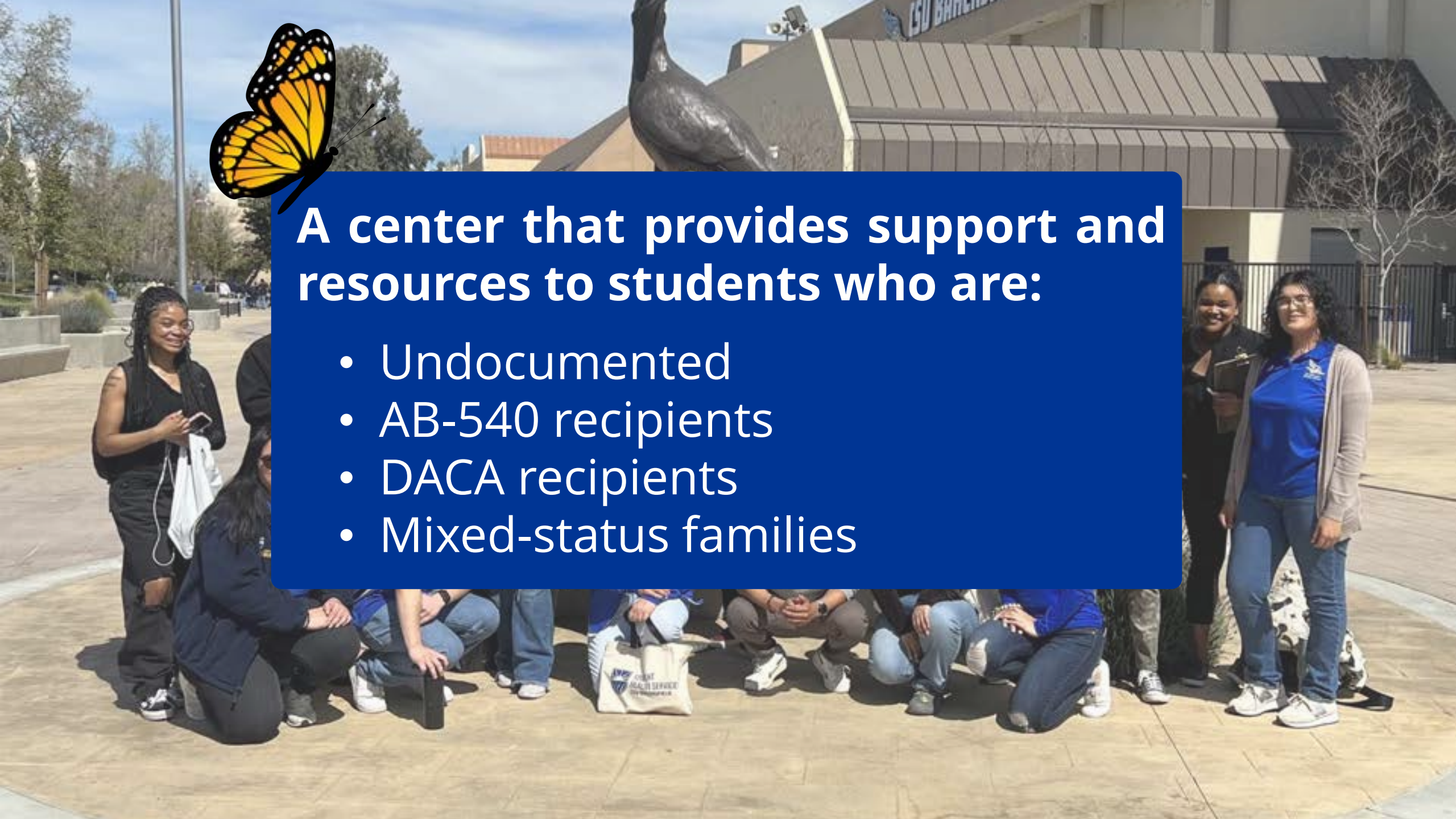
# What is the Dreamers Resource Center?





## A center that provides support and resources to students who are:

- Undocumented
- AB-540 recipients
- DACA recipients
- Mixed-status families



# DREAMERS RESOURCES



**APPLICATION  
SUPPORT**



**COMPUTER  
LAB**



**FREE LEGAL  
IMMIGRATION  
SERVICES**



**FACULTY &  
STAFF  
TRAINING**



**PRESENTATION  
SERVICES**



**ACADEMIC &  
CULTURAL  
EVENTS**

# Legal Immigration Services



Immigrant Legal Defense (ILD) provides free immigration legal services to eligible CSU individuals.

Who is eligible?

- Current Students, Newly Admitted Students, Faculty, & Staff
- Immediate family (spouses, parents, siblings, and dependents)
- Recent graduates (within 2 years after graduating)

## SERVICES:

- DACA RENEWALS
- ADVANCED PAROLE
- REMOVAL DEFENSE
- ASYLUM
- U VISA
- T VISA
- VAWA
- SIJS- SPECIAL IMMIGRANT JUVENILE
- NATURALIZATION
- FAMILY PETITIONS
- TPS + MORE!

# CONSTITUTIONAL RIGHTS RED CARDS AVAILABLE

You have constitutional rights:

- **DO NOT OPEN THE DOOR** if an immigration agent is knocking. If you are inside of your house, show the card through the window or slide it under the door.
- **DO NOT ANSWER ANY QUESTIONS** from an immigration agent if they try to talk to you. You have the right to remain silent.
- **DO NOT SIGN ANYTHING** without first speaking to a lawyer. You have the right to speak with a lawyer.
- If you are outside of your house, **SHOW THIS CARD TO THE AGENT**. Ask the agent if you are free to leave and if they say you can, leave calmly.



[www.RedCardOrders.com](http://www.RedCardOrders.com)

[HTTPS://WWW.ILRC.ORG/RED-CARDS-TARJETAS-ROJAS#ITEM-4476](https://www.ilrc.org/red-cards-tarjetas-rojas#item-4476)



# ASIAN AMERICAN, NATIVE HAWAIIAN, & PACIFIC ISLANDER (AANHPI) STUDENT ACHIEVEMENT PROGRAM



**CULTURALLY  
RELEVANT  
PROGRAMMING**

EVENTS DESIGNED TO  
FACILITATE CULTURAL  
CONNECTION, COMMUNITY  
BUILDING, AND  
PROFESSIONAL  
DEVELOPMENT



**AANHPI  
LOUNGE - FALL  
2025**



**MARRIAN ANGELES  
MANGELES6@CSUB.ED  
U  
661-654-6210**



**PEER  
MENTORING  
PROGRAM**

CREATED TO HELP AANHPI  
PROGRAM STUDENTS  
CONENCT WITH CULTURALLY  
RELEVANT MENTORING AND  
CONNECTION



# WHERE TO FIND US!

**ROHAN  
BUILDING**

**CLOSE TO  
PARKING LOT  
'E'**

**NEXT DOOR  
TO THE  
COUNSELIN  
G CENTER**

**STUDENT  
HOUSING WEST**

**CLOSE TO  
CSUB  
BASEBALL  
FIELD**

**NOT A  
PUBLIC  
SPACE**

# LETS CONNECT!



**DRC.MAGEC**



**MAGEC@CSUB.EDU**



**(661) 654-3530**

# OFFICE HOURS

**MONDAY- FRIDAY**

**8AM-5PM**



# Services & Support for Graduate Students

## Presenters:

- **Lenny Perez** – Center for Accessibility and Essential Needs: <https://www.csub.edu/ssd>
- **Katrina Gilmore** – CECE: Career Education and Community Engagement: [www.csub.edu/cece](http://www.csub.edu/cece)



# **CENTER FOR ACCESSIBILITY AND ESSENTIAL NEEDS**

**CSU BAKERSFIELD**

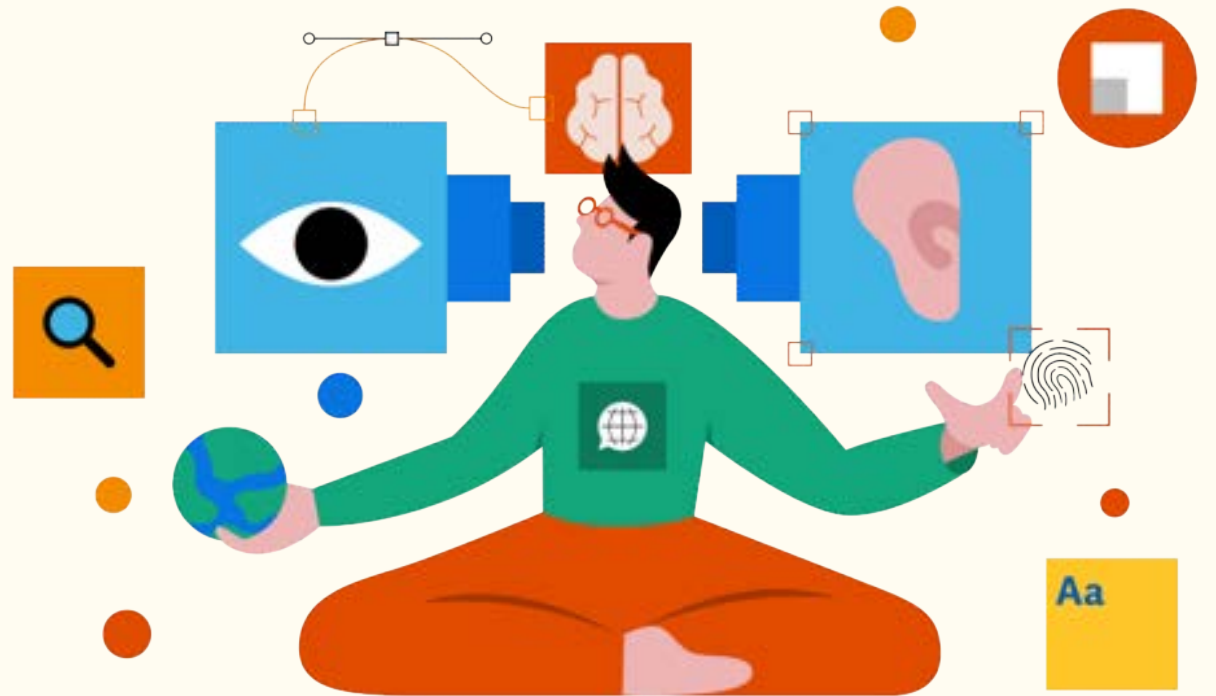
# Accessibility

- ✦ Provide support services, which will enable every student, regardless of disability, to have access to a university education.
  - Academic Accommodations
  - Learning Disability Testing
  - Faculty liaison
  - Ensure campus accessibility
  - Promote awareness



# Services and Accommodations

- Learning Disability Assessment
- Priority Registration
- Extended time on exams
- Notetakers
- Recorded lectures
- ASL Interpreter Services
- Adaptive computer equipment
- Alternate media



# Food Resources

## ◆ Food Pantry:

- Open to CSUB Students, Staff, and Faculty
- Non-perishable items, fresh produce, hygiene
- Select up to 10 items

## ◆ Food Distribution

- Open to the community
- Every 3rd Monday of the Month
- Have the option to drive by or walk up



*@csub\_foodpantry*

# edible garden

- ✦ 7000 lbs were harvested in 2022
- ✦ Volunteer Opportunities
  - Traditional volunteer
  - Lead Volunteer Program
  - Agriculture Business Site intern
- ✦ All produce gets distributed at the weekly pop-up farm stand
  - Wednesday 10 a.m - 1 p.m



*@csubediblegarden*

# additional resources for students

## ✦ Cal Fresh Food

- A program that can help households buy healthy foods
- Nearly 70 % of students are eligible
- CalFresh benefits are issued on an **EBT card** that works like a debit card and can be used at most grocery stores and many farmers' markets to purchase food or seeds



*\*Housing and International students are NOT eligible*

# housing and financial crisis resources

## ✦ On-Campus Emergency Housing

- students experiencing housing crisis may qualify for 30 days free of charge at student housing

## ✦ Off-Campus Emergency Housing

- Short-term support is available for currently displaced students who are not able to move into on-campus housing

## ✦ Emergency Grants

- Assists students who encounter unexpected financial hardships that could impact their academic success.



# housing and financial crisis resources

## Housing Support Program Grants

- ✦ **Move-in and Deposit Grant**
  - For students who have secured housing but need a little extra help with the deposit
- ✦ **Housing Emergency Grant**
  - For students currently housed and have experienced unexpected expenses that impact ability to pay rent
- ✦ **Eviction Protection Grant**
  - For students who are currently housed but are facing eviction



# Services & Support for Graduate Students

## Presenters:

- **Katrina Gilmore** – CECE: Career Education and Community Engagement: [www.csub.edu/cece](http://www.csub.edu/cece)

# Center for Career Education and Community Engagement

---

“CECE”



CALIFORNIA STATE UNIVERSITY  
**BAKERSFIELD**

# CECE Location & Hours



Entwood Building  
Monday – Friday  
8am – 5pm

# CECE Services

## **Career Counseling – Individual Sessions and Recorded Workshops**

- Resume Development
- Interview Preparation and Practice
- Job Search Strategies
- Career Options & Major Exploration
- Graduate School Exploration/Application Prep

## **Connect Students with Employers**

- Career Fairs
- Employer Information Sessions
- On-campus interviews

## **Provide Access to Job, Internship & Community Volunteer Opportunities**

- All positions listed on Handshake (online system)

# Individual Career Counseling Appointments

## Walk-ins

- In person, Bakersfield Campus
- 20-minute quick advising
- No appointment necessary – first come, first serve
- Begin the 2<sup>nd</sup> week of Fall semester



## Scheduled Appointments

- Choice of in-person or virtual
- 45-minutes in length
- Scheduled through Handshake
- Unlimited as a student, 2 free as an alumni
- AV students: Can schedule virtual appointments anytime; we also visit the AV campus each semester for in-person appointments



# Workshops

- Recorded workshops on a variety of Career Development Topics
- Available on our webpage and CSUB CECE YouTube channel
- PowerPoint slides available in Handshake

 CAREER EDUCATION AND  
COMMUNITY ENGAGEMENT  
CSU BAKERSFIELD

# CECE

## VIDEO ON-DEMAND WORKSHOPS

**CECE Anytime, Anywhere:**  
CECE Video On-Demand (VOD) Workshops. Career development workshops recorded for your convenience.

RESUME DEVELOPMENT	INTERVIEW WITH CONFIDENCE	ARE YOU CAREER EXPO READY?	PROFESSIONAL ETIQUETTE
HOW TO EXPAND YOUR NETWORK	LINKEDIN	CHOOSE YOUR MAJOR	GRAD SCHOOL PREPARATION
THE JOB SEARCH	WHY DIDN'T I GET THE JOB?	ENHANCE YOUR CAREER WITH CECE WORKSHOP VIDEOS.	

Watch at your own pace & comfort.  
CSUB CECE YouTube Channel or CECE Website

Subscribe to @csubcece YouTube Channel



 @CSUBCECE

[www.csub.edu/cece](http://www.csub.edu/cece) | 661-654-3033 | [career@csub.edu](mailto:career@csub.edu)

# Career Fairs

CECE hosts several fairs each semester for students to speak directly with employers, graduate schools and community agencies about their programs, internships, volunteer and job opportunities.

## **Spring 2026 Events:**

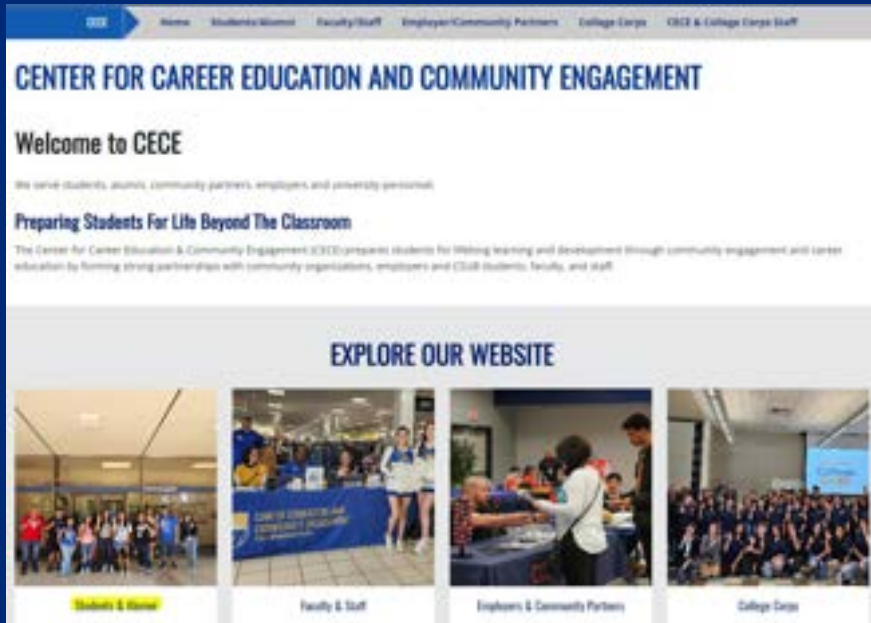
**Spring Volunteer Fair** – Thursday,  
February 6, 2026 – 12pm – 2pm

**JC Penney Suit Up Event** – Friday,  
February 27, 2026 – 4pm - 7pm

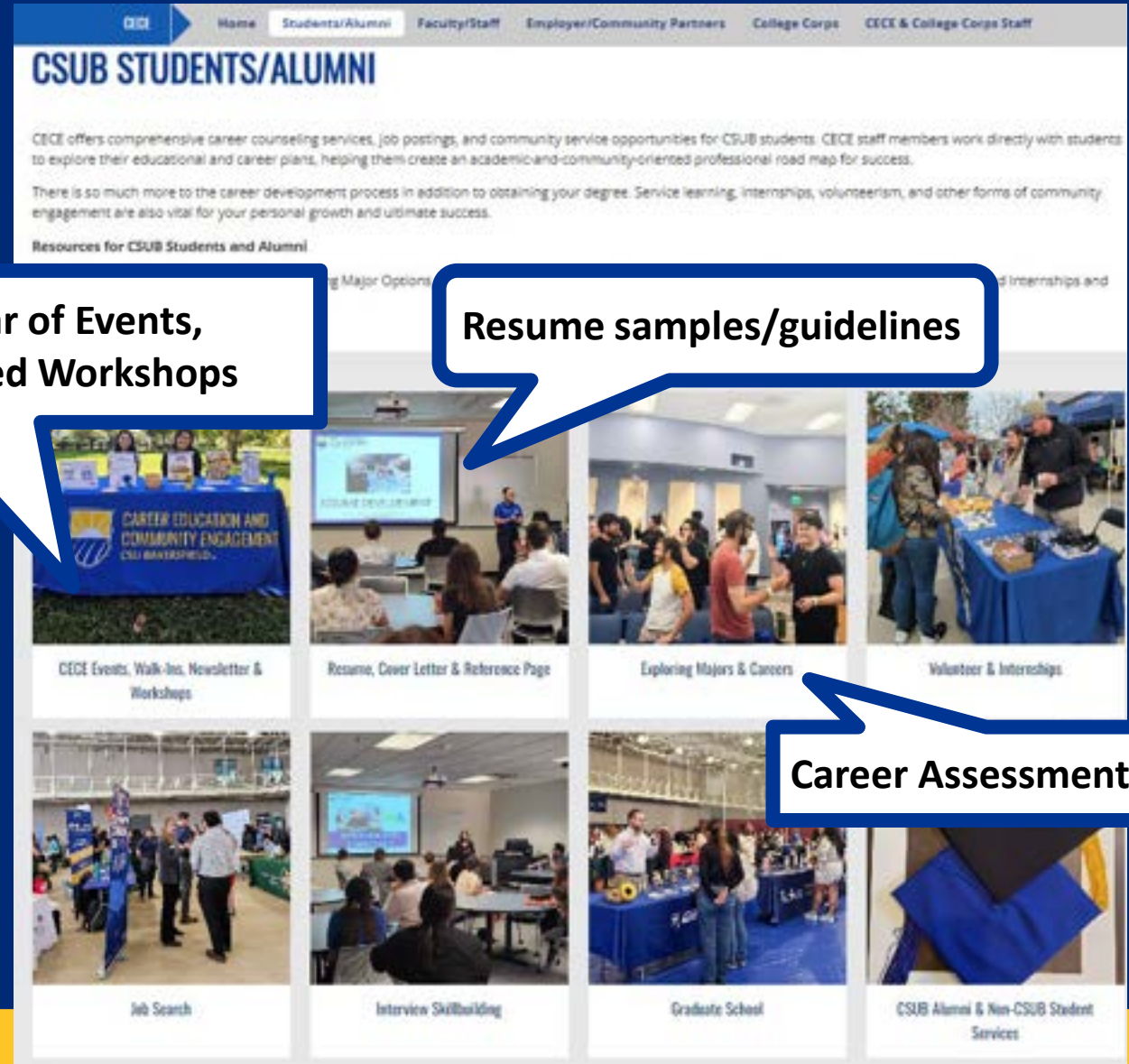
**Spring Career Expo** – Thursday, March 5,  
2026 – 11am – 3pm



# Visit our website: [www.csub.edu/cece](http://www.csub.edu/cece)

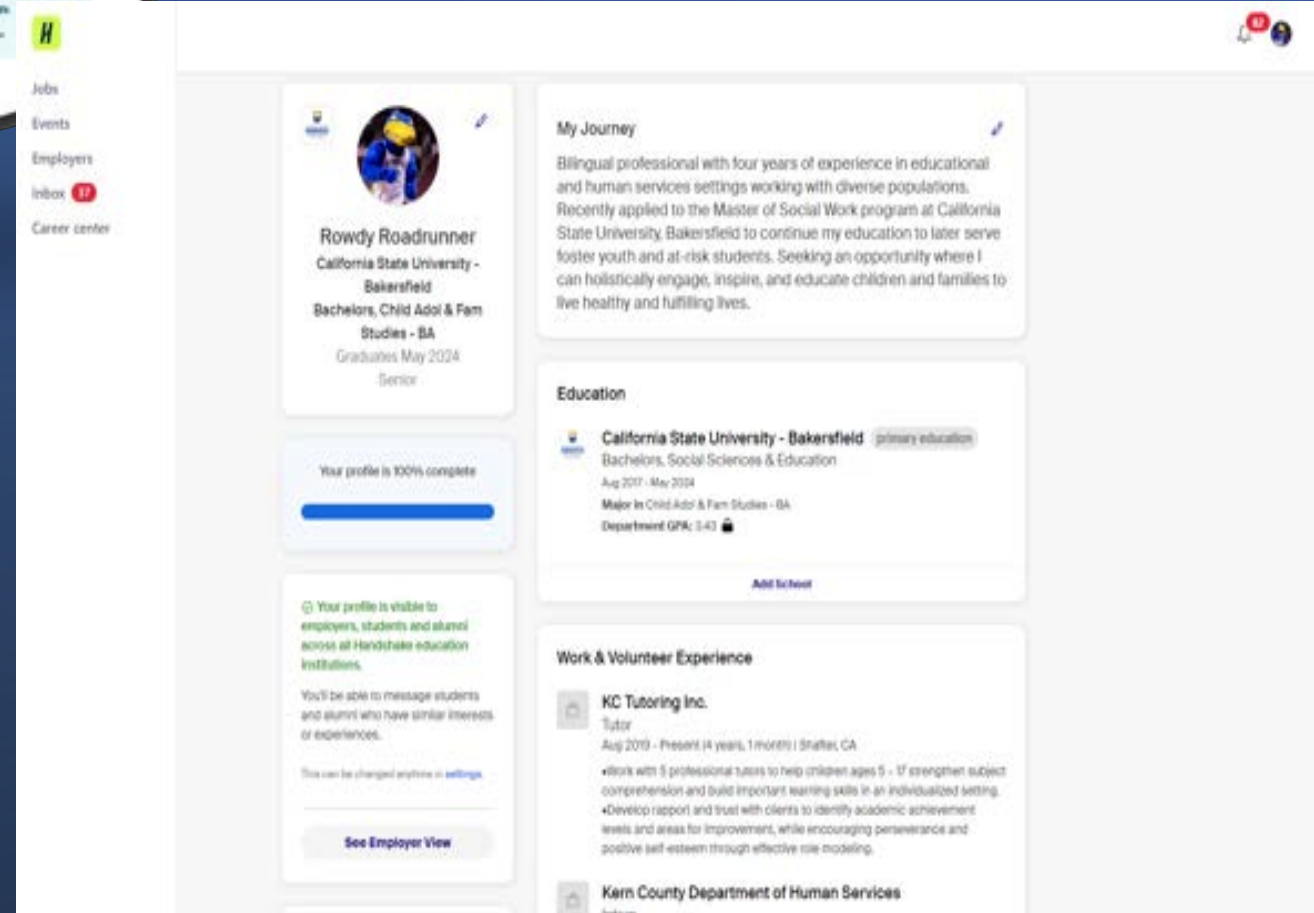


Select "Student/Alumni" for access to numerous Career Development resources



# Introducing Handshake

- Sign in at [csub.joinhandshake.com](https://csub.joinhandshake.com) or from the CECE student website
- To sign in: Use MyCSUB credentials to log in.
- Find job/internship/volunteer opportunities
- See upcoming career events
- Make an appointment to meet with a Career Counselor



# Questions?



@CSUBCECE



[www.csub.edu/cece](http://www.csub.edu/cece)  
[career@csub.edu](mailto:career@csub.edu)  
661-654-3033

Thank you for  
your time!

---

Center for Career Education and Community Engagement (CECE)



CALIFORNIA STATE UNIVERSITY  
**BAKERSFIELD**

Please complete this survey so we can hear your thoughts and feedback about the orientation!



**Thank You!**